

FORD MADDOX BROWN: WORKS ON PAPER AND ARCHIVE MATERIAL AT
BIRMINGHAM MUSEUMS AND ART GALLERY

VOLUME TWO: ILLUSTRATIONS

by

LAURA MacCULLOCH

A thesis submitted to The University of Birmingham
for the degree of
DOCTOR OF PHILOSOPHY

Department of History of Art
College of Arts and Law
The University of Birmingham
September 2009

UNIVERSITY OF
BIRMINGHAM

University of Birmingham Research Archive

e-theses repository

This unpublished thesis/dissertation is copyright of the author and/or third parties. The intellectual property rights of the author or third parties in respect of this work are as defined by The Copyright Designs and Patents Act 1988 or as modified by any successor legislation.

Any use made of information contained in this thesis/dissertation must be in accordance with that legislation and must be properly acknowledged. Further distribution or reproduction in any format is prohibited without the permission of the copyright holder.

VOLUME TWO: ILLUSTRATIONS

CONTENTS

List of Illustrations	page 1
List of Catalogue Illustrations	page 13
Illustrations	page 25
Catalogue Illustrations	page 119

LIST OF ILLUSTRATIONS

- Fig. 1 *The Seeds and Fruits of English Poetry*, 1845-1853, oil on canvas, Ashmolean Museum
- Fig. 2 *Chaucer at the Court of Edward III*, 1845-1851, oil on canvas, The Art Gallery of New South Wales, Sydney
- Fig. 3 *Wycliffe reading his Translation of the Bible to John of Gaunt in the Presence of Chaucer and Gower* (unframed), 1848, oil on canvas, Cartwright Hall Art Gallery, Bradford
- Fig. 4 *Work*, 1852-1865, oil on canvas, Birmingham Museums and Art Gallery
- Fig. 5 *Last of England*, 1852-1855, oil on panel, Birmingham Museums and Art Gallery
- Fig. 6 *The Spirit of Justice*, pub. 1846, wood engraving after a cartoon by Ford Madox Brown in Frederick Knight Hunt, *The Book of Art* (engraver unknown)
- Fig. 7 *Oure Ladye of Saturday Night*, 1847-1861, pastel, watercolour and gold paint on paper, Tate, London
- Fig. 8 Eugène Delacroix, *Hamlet and the Queen*, pub. 1843, lithographed by F. Villain (active by 1824)
- Fig. 9 *King Lear: Lear questions Cordelia*, 1844, pencil, pen and brown ink, Whitworth Art Gallery
- Fig. 10 *King Lear: France claims the disposed Cordelia*, 1844, pencil, pen and brown ink, Whitworth Art Gallery
- Fig. 11 *King Lear: Cordelia parting from her Sisters*, 1844, pencil, pen and brown ink, Whitworth Art Gallery
- Fig. 12 *King Lear: Goneril and Regan together*, 1844, pencil, pen and brown ink, Whitworth Art Gallery
- Fig. 13 *King Lear: Goneril tells Oswald how to treat Lear*, 1844, pencil, pen and brown ink, Whitworth Art Gallery
- Fig. 14 *King Lear: Oswald's Insolence to Lear*, 1844, pencil, pen and brown ink, Whitworth Art Gallery
- Fig. 15 *King Lear: Lear rebukes Oswald*, 1844, pencil, pen and brown ink, Whitworth Art Gallery
- Fig. 16 *King Lear: Kent trips Oswald*, 1844, pencil, pen and brown ink, Whitworth Art Gallery

- Fig. 17 *King Lear: Goneril's Complaint to Lear*, 1844, pencil, pen and brown ink, Whitworth Art Gallery
- Fig. 18 *King Lear: Lear curses Goneril's Infidelity*, 1844, pencil, pen and brown ink, Whitworth Art Gallery
- Fig. 19 *King Lear: Kent challenges Oswald*, 1844, pencil, pen and brown ink, Whitworth Art Gallery
- Fig. 20 *King Lear: Kent in the Stocks*, 1844, pencil, pen and brown ink, Whitworth Art Gallery
- Fig. 21 *King Lear: Lear recounts his Wrongs to Regan*, 1844, pencil, pen and brown ink, Whitworth Art Gallery
- Fig. 22 *King Lear: Lear parts from Regan and Goneril cursing*, 1844, pencil, pen and brown ink, Whitworth Art Gallery
- Fig. 23 *King Lear: Lear and the Fool in the Storm*, 1844, pencil, pen and brown ink, Whitworth Art Gallery
- Fig. 24 *King Lear: Lear mad on the Beach at Dover*, 1844, pencil, pen and brown ink, Whitworth Art Gallery
- Fig. 25 *King Lear: alternative study of Lear curses Goneril's Infidelity*, 1844, pencil, pen and brown ink, Whitworth Art Gallery
- Fig. 26 *King Lear: Sketch of Lear imagines himself at his unfaithful Daughter's Trial*, 1844, pencil, Whitworth Art Gallery
- Fig. 27 *King Lear: Alternative Study for Lear in the Storm*, 1844, pencil, pen and brown ink, Whitworth Art Gallery
- Fig. 28 F. M. Retzsch, *King Lear: Gloucester has his Eyes gouged out by Cornwall*, pub. 1838, engraving
- Fig. 29 F. M. Retzsch, *Lear Curses Goneril's Infidelity*, pub. 1838, engraving
- Fig. 30 F. M. Retzsch, *King Lear: Kent in the Stocks*, pub. 1838, engraving
- Fig. 31 F. M. Retzsch, *King Lear: Lear imagining his unfaithful Daughters' Trial*, pub. 1838, engraving
- Fig. 32 F. M. Retzsch, *King Lear: Lear's Awakening*, pub. 1838, engraving
- Fig. 33 F. M. Retzsch, *King Lear: The Death of Lear and Cordelia*, pub. 1838. engraving
- Fig. 34 *The Execution of Mary Queen of Scots*, 1840-1842, oil on canvas, Whitworth Art Gallery, Manchester

- Fig. 35 *The Prisoner of Chillon*, 1843, oil on canvas, Manchester Art Gallery
- Fig. 36 Henry Fuseli, *The Death of Cardinal Beaufort*, 1772, pen and ink with wash, Walker Art Gallery, Liverpool
- Fig. 37 *Lear and Cordelia*, 1848-1849, oil on canvas, Tate, London
- Fig. 38 *The Parting of Cordelia from her Sisters*, 1853, oil on canvas, private collection
- Fig. 39 *Cordelia's Portion*, 1865-1866, watercolour, gouache and pastel, Lady Lever Art Gallery, Port Sunlight
- Fig. 40 Henry Fuseli, *Lear disinheriting Cordelia (Lear banishing Cordelia)*, pub. 1792, stipple engraving by Richard Earlom (1742?-1822)
- Fig. 41 Henry Fuseli, *Lear awakens to find Cordelia beside his Bed*, pub. 1874, mezzotint engraved by John Raphael Smith (1752-1812)
- Fig. 42 Henry Fuseli, *Lear supporting the dead Body of his Daughter*, pub. 1804, engraving (engraver unknown)
- Fig. 43 *The Ascension*, 1844-1845, oil on canvas, Forbes collection
- Fig. 44 James Northcote after Henry Fuseli *Galanthis deceives Eleithyia by announcing the Birth of Hercules*, c.1777-1778, pen and wash, Courthauld Institute, London
- Fig. 45 Henry Fuseli, *The Death of Dido*, exh. RA 1781, oil on canvas, Paul Mellon Collection, Yale Center for British Art
- Fig. 46 Henry Fuseli, *Queen Katherine's Dream*, exh. RA 1781, oil on canvas, Fylde Borough Council
- Fig. 47 William Blake, *Christ appearing to the Apostles after the Resurrection*, c.1795, colour print finished in ink and watercolour and varnish on paper, Tate, London
- Fig. 48 William Blake, *God writing on the Tables of the Covenant*, c.1805, pen, ink and watercolour on paper, National Gallery of Scotland, Edinburgh
- Fig. 49 William Blake, *Leonora: Frontispiece*, pub. 1796, engraving by Perry, British Library, London
- Fig. 50 William Blake, *The Grave: The Day of Judgment*, pub. 1808, etching by Louis Schiavonetti (1765-1810), University of Birmingham Special Collections

- Fig. 51 William Blake, *The Grave: The Soul hovering over the Body reluctantly parting with Life*, pub. 1808, etching by Louis Schiavonetti, University of Birmingham Special Collections
- Fig. 52 William Blake, *The Grave: The Meeting of a Family in Heaven*, pub. 1808, etching by Louis Schiavonetti, University of Birmingham Special Collections
- Fig. 53 John Flaxman, *Sleep escaping from the Wrath of Jupiter* from the *Iliad*, book 14, line 294, pub. 1795, engraved by Tommaso Piroli (1752-1824)
- Fig. 54 Henry Fuseli, *Hephaestus, Bia and Crato securing Prometheus on Mount Caucasus*, c.1800-1810, pencil and grey wash, Auckland Art Gallery, New Zealand
- Fig. 55 Henry Fuseli, *Prometheus*, pencil and brown ink and brown wash, c.1770-1771, Kunstmuseum, Basel
- Fig. 56 John Flaxman, *Prometheus Bound*, pen and ink over pencil, 1794, Royal Academy of Arts, London
- Fig. 57 After Edward Armitage, *Howard visiting a Prison*, modern photograph, Witt Library, The Courthauld Institute, London
- Fig. 58 John Flaxman, *Othus and Ephialtes holding Mars Captive* from the *Iliad*, book 5, line 678, pub. 1795, engraved by Tommaso Piroli
- Fig. 59 Unknown artist, *Drawing of a Prison Scene*, c.1779, pen and ink, Ashmolean Museum, Oxford
- Fig. 60 Eugène Delacroix, *The Prisoner of Chillon*, exh. Salon 1835, oil on canvas, Louvre, Paris
- Fig. 61 Henry Fuseli, *Lady Macbeth sleepwalking (Shakespeare, Macbeth, V, i)*, pub. 1784, mezzotint engraving by John Raphael Smith (1752-1812)
- Fig. 62 *Oil sketch for Manfred in the Chamois Hunter's Hut*, 1840, oil on canvas, Nottingham Castle Museum and Art Gallery
- Fig. 63 *Manfred on the Jungfrau*, 1840-1841, oil on canvas, Manchester Art Gallery
- Fig. 64 Tony Johannot, *Manfred*, pub. 1836 in *Oeuvres de Lord Byron*, tr. Amédée Pichot, engraving by Koenig
- Fig. 65 Gilbert Stuart Newton, *Yorick and Griselle*, exh. RA 1830, oil on canvas, Tate, London
- Fig. 66 F. M. Retzsch, *Leonora: Second Illustration*, pub. 1840, engraving

- Fig. 67 *Dr Primrose and his Daughters* (a scene from *The Vicar of Wakefield*), 1840-1841, oil on canvas, Manchester Art Gallery
- Fig. 68 William Hogarth, *Marriage a-la-Mode: 2. The Tête à Tête*, 1745, oil on canvas, National Gallery, London
- Fig. 69 William Powell Frith, *The Pulse, Paris*, 1841, oil on canvas, Victoria and Albert Museum
- Fig. 70 *The Body of Harold brought before William the Conqueror*, 1844-1861, oil on canvas, Manchester Art Gallery
- Fig. 71 Raphael Sanzio, *Deposition*, 1507, oil on wood, Galleria Borghese, Rome
- Fig. 72 William Theed, *Queen Victoria and Prince Albert on the Saxon Shore*, 1868, marble, Royal Collection
- Fig. 73 Daniel Maclise, *Alfred, the Saxon King, (disguised as a Minstrel) in the Tent of Guthrum the Dane*, 1852, oil on canvas, Laing Art Gallery
- Fig. 74 George Frederick Watts, *Alfred inciting the English to resist the Danes*, 1847, oil on canvas, Houses of Parliament
- Fig. 75 Frederich Overbeck, *The Triumph of Religion in the Arts*, 1840, oil on canvas, Städelsches Kunst-institut, Frankfurt
- Fig. 76 Peter Cornelius, *The Incredulity of St. Thomas*, c.1834-1836, pencil, Staatliche Kunstsammlungen, Weimar
- Fig. 77 *The Seeds and Fruits of English Poetry*, 1845, black chalk on paper, Cecil Higgins Art Gallery, Bedford
- Fig. 78 *Geoffrey Chaucer, the Father of English Poetry*, pub. 1846, wood engraving after a sculpture by W. Calder Marshall in Frederick Knight Hunt, ed., *The Book of Art* (engraver unknown)
- Fig. 79 *Wycliffe reading his Translation of the Bible to John of Gaunt in the Presence of Chaucer and Gower* (framed), 1848, oil on canvas, Cartwright Hall Art Gallery, Bradford
- Fig. 80 *Wycliffe reading his Translation of the Bible: Oil Sketch*, 1847-1848, oil on board, Cartwright Hall Art Gallery, Bradford
- Fig. 81 *St Ives, AD 1630. Cromwell on his Farm*, 1853-1874, oil on canvas, Lady Lever Art Gallery, Port Sunlight
- Fig. 82 *Cromwell Discussing the Protection of the Vandois with Milton and Andrew Marwell*, 1877-1878, oil on canvas, Castle Museum and Art Gallery, Nottingham

- Fig. 83 Anonymous, *Title Page of John Saunders 'Cabinet Pictures of English Life: Chaucer,'* pub. 1845, wood engraving (engraver unknown)
- Fig. 84 Anonymous, *Frontispiece,* pub. 1687, engraving in Thomas Speght, ed., *The Works of our ancient, learned, & excellent English Poet, Jeffrey Chaucer,* (engraver unknown)
- Fig. 85 Henry Shaw, *Chaucer,* pub. 1843, hand coloured engraving in *Dresses and Decorations of the Middle Ages,* vol. 1, pl. 38
- Fig. 86 *Effigy of John Gower,* Southwark Cathedral
- Fig. 87 Charles Alfred Stothard, *Effigy of The Black Prince,* pub. 1817, etching in *The Monumental Effigies of Great Britain,* pl. 85
- Fig. 88 Charles Alfred Stothard, *Effigy of Edward III,* pub. 1817, etching in *The Monumental Effigies of Great Britain,* pl. 83
- Fig. 89 Charles Alfred Stothard, *Effigies of William of Windsor and Blanche de la Tour,* pub. 1817, etching in *The Monumental Effigies of Great Britain,* pl. 79
- Fig. 90 Charles Alfred Stothard, *Side view of the Effigy of Blanche de la Tour,* pub. 1817, etching in *The Monumental Effigies of Great Britain,* pl. 81
- Fig. 91 Paul Mercuri, *Archèveque,* pub. 1829-1830, engraving in Camille Bonnard's *Costume Historique,* pl. 79
- Fig. 92 Paul Mercuri, *Seigneur de Rimini,* pub. 1829-1830, engraving in Camille Bonnard's *Costume Historique,* pl. 75
- Fig. 93 Paul Mercuri, *Pétrarque,* pub. 1829-1830, engraving in Camille Bonnard's *Costume Historique,* pl. 44
- Fig. 94 Paul Mercuri, *Cimabue,* pub. 1829-1830, engraving in Camille Bonnard's *Costume Historique,* pl. 32
- Fig. 95 Paul Mercuri, *Hommes d'Armes,* pub. 1829-1830, engraving in Camille Bonnard's *Costume Historique,* pl. 13
- Fig. 96 Paul Mercuri, *Jeune Francais,* pub. 1829-1830, engraving in Camille Bonnard's *Costume Historique,* pl. 71
- Fig. 97 Paul Mercuri, *Podestat,* pub. 1829-1830, engraving in Camille Bonnard's *Costume Historique,* pl. 9
- Fig. 98 Paul Mercuri, *Jeunes Pages,* pub. 1829-1830, engraving in Camille Bonnard's *Costume Historique,* pl. 21

- Fig. 99 J. R. Planché, *Charles le Bon, Count of Flanders*, pub. 1834, wood engraving in *British Costume: A complete History of the Dress of the Inhabitants of the British Isles* (engraver unknown)
- Fig. 100 Paul Mercuri, *Jeune Vénitien*, pub. 1829-1830, engraving in Camille Bonnard's *Costume Historique*, pl. 83
- Fig. 101 Paul Mercuri, *Fantassin Italien*, pub. 1829-1830, engraving in Camille Bonnard's *Costume Historique*, pl. 14
- Fig. 102 Joseph Strutt, *Ladies Headresses of the 14th Century*, pub. 1842, engraving in *A complete View of the Dress and Habits of the People of England* (engraver unknown), pl. XCVIII
- Fig. 103 J. R. Planché, *Female Head-dresses*, pub. 1834, wood engraving in *British Costume: A complete History of the Dress of the Inhabitants of the British Isles* (engraver unknown), p. 116
- Fig. 104 Anonymous, *Ladies' Head-dresses*, pub. 1837, wood engraving in *The pictorial History of England* (engraver unknown), vol. 1, p. 867
- Fig. 105 Joseph Strutt, *The Anglo-Saxon Monarch of the ninth Century in his State Habit*, pub. 1842, engraving in *A complete View of the Dress and Habits of the People of England* (engraver unknown), pl. XVII
- Fig. 106 *Two Drawings of Men in Hoods*, c.1845, pencil on paper, Ashmolean Museum, Oxford
- Fig. 107 Frederick William Fairholt, *Men in Hoods*, pub. 1 January 1843, wood engraving in 'Notes on British Costume, Part the Third: The Plantagenets' (engraver unknown), *The Art Union*, vol. 5, no. 48, p. 8
- Fig. 108 Frederick William Fairholt, *Ordinary Costume of the Commonality*, pub. 1 January 1843, wood engraving in 'Notes on British Costume. Part the Third: The Plantagenets' (engraver unknown), *The Art Union*, vol. 5, no. 48, p. 7
- Fig. 109 Anonymous, *Queen Philippa*, pub. 1837, wood engraving in *The pictorial History of England* (engraver unknown), vol. 1, p. 751
- Fig. 110 Anonymous, *Two views of a Cardinal's Hat*, pub. 1837, wood engraving in *The pictorial History of England* (engraver unknown), vol. 1, p. 869
- Fig. 111 Anonymous, *Male Costume, Time of Edward III*, pub. 1837, wood engraving in *The pictorial History of England* (engraver unknown), vol. 1, p. 869
- Fig. 112 Anonymous, *Library Chair, Reading Table, and Reading Desk*, pub. 1837, wood engraving in *The pictorial History of England* (engraver unknown), vol. 1, p. 864

- Fig. 113 Augustus Welby Pugin, *State Chair*, engraving in *Gothic Furniture in the Style of the 15th Century* (engraver unknown), pub. 1835
- Fig. 114 Henry Shaw, *A Reading Desk from Detling Church, Kent*, pub. 1836, engraving in *Specimens of Ancient Furniture drawn from existing Authorities*
- Fig. 115 Henry Shaw, *A Reading Desk from Ramsay Church, Huntingdonshire*, pub. 1836, engraving in *Specimens of Ancient Furniture*
- Fig. 116 *The Seeds and Fruits of English Poetry: Study of the right Side of the composition*, c.1845, brown pen and ink with pencil, Ashmolean Museum
- Fig. 117 *Chaucer at the Court of Edward III: Study of a Man in a Hood with a Liripipe, and two drapery Studies*, 1848, oil on canvas, Manchester Art Gallery
- Fig. 118 W. Holman Hunt, *My Beautiful Lady*, pub. January 1850 etching in *The Germ*,
- Fig. 119 W. H. Deverall, *Viola and Olivia*, pub. May 1850, etching in *The Germ*,
- Fig. 120 J. Collinson, *The Child Jesus*, pub. February 1850, etching in *The Germ*,
- Fig. 121 J. Franklin, *Illustration to Chevy Chase*, pub. 1836, engraving (engraver unknown), pl. 10
- Fig. 122 J. Franklin, *Chevy Chase*, pub. 1842, wood engraving by Armstrong in *The Book of British Ballads*
- Fig. 123 John Gilbert, *Autumn*, pub. 1856, wood engraving by the Dalziel Brothers in *Longfellow's Poems*
- Fig. 124 John Gilbert, *The Skeleton in Armour*, pub. 1856, wood engraving by the Dalziel Brothers in *Longfellow's Poems*
- Fig. 125 John Gilbert, *Drinking Song*, pub. 1856, wood engraving by the Dalziel Brothers in *Longfellow's Poems*
- Fig. 126 John Gilbert, *Sea-weed*, pub. 1856, wood engraving by the Dalziel Brothers in *Longfellow's Poems*
- Fig. 127 William Hogarth, *The Idle 'Prentice betrayed by his Whore, & taken in a Night Cellar with his Accomplice*, pub.1747, etching and engraving
- Fig. 128 William Hogarth, *Gin Lane*, pub. 1751, etching and engraving
- Fig. 129 William Hogarth, *The Reward of Cruelty* , pub. 1751, etching and engraving

- Fig. 130 F. M. Retzsch, *Leonora: Third Illustration*, pub. 1840, engraving
- Fig. 131 F. M. Retzsch, *Leonora: Fourth Illustration*, pub. 1840, engraving
- Fig. 132 F. M. Retzsch, *The Parson's Daughter: Third Illustration*, pub. 1840, engraving
- Fig. 133 F. M. Retzsch, *The Parson's Daughter: Fourth Illustration*, pub. 1840, engraving
- Fig. 134 P. von Cornelius, *Title Page to Goethe's Faust*, c.1815, pen and ink, Städelsches Kunstinstitut, Frankfurt-am-Main
- Fig. 135 J. Hansclever, *Illustration from Lieder und Bilder*, pub. 1843, etching by T. Janssen, p. 11
- Fig. 136 Alfred Rethel, *Another Dance of Death*, pub. 1849, wood engraving (engraver unknown)
- Fig. 137 Alfred Rethel, *Death as the Friend*, pub. 1851, wood engraving by J. Jungtow
- Fig. 138 Hans Holbein the Younger, *Dead Christ*, 1521, oil on wood, Offentliche Kunstmuseum, Basel
- Fig. 139 Dante Gabriel Rossetti, *The Maids of Elfen Mere*, pub. 1855, wood engraving by the Dalziel Brothers in Alfred Tennyson, *Poems*
- Fig. 140 John Everett Millais, *Love*, pub. 1857, wood engraving by the Dalziel Brothers in *Poets of the Nineteenth Century*
- Fig. 141 *The Prisoner of Chillon entreating his Jailors to bury his Brother where the Sun Might fall upon his Grave*, 1858, watercolour heightened with bodycolour, Yale Center for British Art
- Fig. 142 *Detail of Fig. 141*
- Fig. 143 John Everett Millais, *The Sisters*, pub. 1857, wood engraving by the Dalziel Brothers in Alfred Tennyson, *Poems*
- Fig. 144 Dante Gabriel Rossetti, *The Palace of Art*, pub. 1857, wood engraving by the Dalziel Brothers in Alfred Tennyson, *Poems*
- Fig. 145 Frederick Richard Pickersgill, *Rahab and the Spies*, pub. 1881, wood engraving by the Dalziel Brothers in *Dalziels' Bible Gallery*
- Fig. 146 J. Schnorr von Carolsfeld, *Elijah reviving the Son of the Widow*, pub. 1851, wood engraving in *Bilderbibel*

- Fig. 147 Austen Henry Layard, *Sacred Emblems round the Neck of the King (N. W. Palace, Nimroud)*, pub. 1849, wood engraving in *Nineveh and Its Remains* (engraver unknown), vol. 2, p. 446
- Fig. 148 Austen Henry Layard, *Handles of three Daggers carried in the Girdle. (N. W. Palace, Nimroud)*, pub. 1849, wood engraving in *Nineveh and Its Remains* (engraver unknown), vol. 2, p. 299
- Fig. 149 Austen Henry Layard, *The King (N. W. Palace, Nimroud)*, pub. 1849, wood engraving in *Nineveh and Its Remains* (engraver unknown), vol. 2, p. 6
- Fig. 150 Austen Henry Layard, *Enemies of the Assyrians discharging their Arrows behind them (Kouyunjik)*, pub. 1849, wood engraving in *Nineveh and Its Remains* (engraver unknown), vol. 2, p. 402
- Fig. 151 *Altar, or Tripod (From Khorsabad)*, pub. 1849, wood engraving in *Nineveh and Its Remains* (engraver unknown), vol. 2, p. 470
- Fig. 152 *The Coat of Many Colours*, 1864-1866, oil on panel, Walker Art Gallery, Liverpool
- Fig. 153 *Elijah and the Widow's Son*, 1864, oil on panel, Birmingham Museum and Art Gallery
- Fig. 154 *He that Soweth*, pub. 1868, wood engraving by the Dalziel Brothers in *Lyra Germanica*
- Fig. 155 *The Entombment*, 1871-1878, watercolour, gouache, gold paint and gum arabic over pencil on two sheets of paper, National Gallery of Victoria
- Fig. 156 *The Sower, tile for Morris, Marshall, Faulkner and Co.*, c.1864-1873, Fitzwilliam Museum, Cambridge
- Fig. 157 *Childe Harold's Pilgrimage*, pub. 1870, steel engraving by Herbert Bourne in William Michael Rossetti, ed., *The Poetical Works of Lord Byron*
- Fig. 158 *The Two Foscari*, pub. 1870, steel engraving by Herbert Bourne in William Michael Rossetti, ed., *The Poetical Works of Lord Byron*
- Fig. 159 *The Corsair*, pub. 1870, steel engraving by Herbert Bourne in William Michael Rossetti, ed., *The Poetical Works of Lord Byron*
- Fig. 160 *Sardanapalus*, pub. 1870, steel engraving by Herbert Bourne in William Michael Rossetti, ed., *The Poetical Works of Lord Byron*
- Fig. 161 *Don Juan*, pub. 1870, steel engraving by Herbert Bourne in William Michael Rossetti, ed., *The Poetical Works of Lord Byron*

- Fig. 162 *Frontispiece*, pub. 1870, steel engraving by Herbert Bourne in William Michael Rossetti, ed., *The Poetical Works of Lord Byron*
- Fig. 163 *Finding of Don Juan by Haidee*, 1870-1873, oil on canvas, Birmingham Museums and Art Gallery
- Fig. 164 *The Dream of Sardanapalus*, 1871-1872, watercolour on paper, Delaware Art Museum, Samuel and Mary R. Bancroft Collection, Wilmington
- Fig. 165 *The Traveller*, pub. 1869, wood engraving by Joseph Swain in *Once a Week*, vol. 3, p. 145
- Fig. 166 *The Infant's Repast*, 1848, oil on board, Wightwick Manor, Wolverhampton
- Fig. 167 *Pretty Baa Lambs*, 1851, oil on canvas, Birmingham Museums and Art Gallery
- Fig. 168 George Pinwell, *Or sigh with Pity at some mournful Tale*, pub. 1865, wood engraving by the Dalziel Brothers in *Dalziels' Illustrated Goldsmith*
- Fig. 169 *The Traveller*, 1868-1884, oil on panel, Manchester Art Gallery
- Fig. 170 Augustus Leopold Egg, *Past and Present, No. 3*, 1858, oil on canvas, Tate, London
- Fig. 171 *Front Cover of Gabriel Denver by Oliver Madox Brown*, pub. 1873
- Fig. 172 Katsushika Hokusai, *Page of Animal Cartoons*, pub. c.1815, wood engraving in *Manga*, vol. 2, p. 41
- Fig. 173 *Detail of a Rabbit in Fig. 172*
- Fig. 174 *Oliver Madox Brown aged four: Frontispiece to volume one of Dwale Bluth: Hebditch's Legacy and Other Literary Remains of Oliver Madox Brown*, pub. 1876, etching
- Fig. 175 *Oliver Madox Brown as a young Man: Frontispiece to volume two of Dwale Bluth: Hebditch's Legacy and Other Literary Remains of Oliver Madox Brown*, pub. 1876, etching
- Fig. 176 *Title Page Illustration in A Beggar and other Fantasies*, pub. 1889, photo-engraving
- Fig. 177 *Title Page Illustration in Dramas in Miniature*, pub. 1891, photo-engraving
- Fig. 178 *Frontispiece to The Brown Owl*, pub. 1892, photo-engraving
- Fig. 179 *Central Illustration to The Brown Owl*, pub. 1892, photo-engraving

- Fig. 180 *Frontispiece to The Feather*, pub. 1892, photo-engraving
- Fig. 181 *The Ascension: Study for Christ*, 1844, pen and ink, location unknown
- Fig. 182 Possibly Charles Thurston Thompson, *Thomas Carlyle*, c.1859, albumen print

LIST OF CATALOGUE ILLUSTRATIONS

- Cat. no. 1** *Alfred the Great: Sketch of Alfred drawing in the Sand, 1843-1845, pencil*
- Cat. no. 1 verso** *Historical Notes and Sketches of Alfred the Great, 1843-1850, brown ink writing over pencil*
- Cat. no. 2** *Angels watching the Crown of Thorns: Study of clasped Hands, 1846, black chalk*
- Cat. no. 3** *Architecture: Study of Gothic Arches and 14th Century Vaulting, c. 1847, brown pen and ink over pencil on grey paper*
- Cat. no. 4** *The Ascension, 1844-1900, albumen print*
- Cat. no. 5** *The Ascension: Study of Angels and Hands, 1844, brown pen and ink over pencil*
- Cat. no. 6** *The Ascension: Study of a Group of Angels, 1844, brown pen and ink over pencil*
- Cat. no. 7** *The Ascension: Study of a Group of six flying Angels, 1844, brown pen and ink over pencil*
- Cat. no. 7 verso** *The Ascension: Two nude Angels holding onto each other, 1844, brown brush and ink over pencil*
- Cat. no. 8** *The Ascension: Study for a kneeling Apostle, 1844, black chalk touched with white on brown-toned paper*
- Cat. no. 8 verso** *Head of a Child, c. 1844, black chalk touched with white on brown toned paper*
- Cat. no. 9** *The Ascension: Drapery Study of a praying Apostle, 1844, black chalk*
- Cat. no. 9 verso** *The Spirit of Justice: Seated Figure in ecclesiastical Robes, gripping a Staff with left Hand raised in a Blessing, 1844, black chalk*
- Cat. no. 10** *The Ascension: Study for an Apostle, 1844, black chalk*
- Cat. no. 10 verso** *The Spirit of Justice: Body of seated Figure in ecclesiastical Robes holding a Staff and a Book, 1844, black chalk*
- Cat. no. 11** *The Ascension: Study of an Apostle, 1844, black chalk on toned paper*

- Cat. no. 11 verso** *Full-length Sketch of a standing, naked Child*, 1844, black chalk on toned paper
- Cat. no. 12** *The Ascension: Study for Christ*, 1844, brown pen and ink over pencil
- Cat. no. 13** *Caricature: Composite Drawing: A Stunner*, 1861-1863, pencil
- Cat. no. 13 verso** *A Victorian Woman in her Underwear*, 1861-1863, pencil
- Cat. no. 14** *Caricature: Composite Drawing: Bewigged Head*, 1861-1863, pencil
- Cat. no. 14 verso** *Bowed Head of a bearded Man*, 1861-1863, pencil
- Cat. no. 15** *Chaucer at the Court of Edward III: Early compositional Study*, 1845, pencil with brown pen and ink
- Cat. no. 15 verso** *Chaucer at the Court of Edward III: Study for Milton and two Designs for Tombstones*, c.1845-c.1846, pencil with brown frame outline
- Cat. no. 15a** *Chaucer at the Court of Edward III: Tracing of the Figure of Milton*, c.1845-c.1849, brown pen and ink with pencil on tracing paper
- Cat. no. 15b** *Chaucer at the Court of Edward III: Tracing of a Gothic Arch*, c.1845-c.1849, brown pen and ink with pencil on tracing paper
- Cat. no. 16** *Chaucer at the Court of Edward III: Early compositional Study*, 1845, pencil with brown pen and ink
- Cat. no. 17** *Chaucer at the Court of Edward III: Nude Studies of two Boys*, 1845, pencil, laid down
- Cat. no. 18** *Chaucer at the Court of Edward III: Nude Studies of four Figures*, 1845, pencil
- Cat. no. 19** *Chaucer at the Court of Edward III: Eight early Studies of Figures and Hands*, 1845, pencil
- Cat. no. 20** *Chaucer at the Court of Edward III: Nude Studies for the Figures of Byron, Shakespeare and Burns*, 1845, black chalk
- Cat. no. 21** *Chaucer at the Court of Edward III: Drapery Study for Burns*, 1847, black chalk
- Cat. no. 22** *Chaucer at the Court of Edward III: Study of a right Leg and left Foot for Milton*, 1847, black chalk

- Cat. no. 23** *Chaucer at the Court of Edward III: Study of a left Leg for Shakespeare, 1847, black chalk*
- Cat. no. 24** *Chaucer at the Court of Edward III: Study of Drapery for Milton, 1847, black chalk*
- Cat. no. 25** *Chaucer at the Court of Edward III: Drapery Study for Shakespeare, 1847, black chalk*
- Cat. no. 26** *Chaucer at the Court of Edward III: Study of a Man in a medieval Hood, 1847, black chalk*
- Cat. no. 27** *Chaucer at the Court of Edward III: Study for the Cardinal, 1847, black chalk*
- Cat. no. 28** *Chaucer at the Court of Edward III: Drapery Study in Profile for Courtier, 1847, black chalk*
- Cat. no. 29** *Chaucer at the Court of Edward III: Drapery Study, 1847, black chalk*
- Cat. no. 30** *Chaucer at the Court of Edward III: Female Nude Study of a Muse holding onto a Rail, 1847, pencil*
- Cat. no. 31** *Chaucer at the Court of Edward III: Female Nude: Study of a Muse, 1847, pencil*
- Cat. no. 32** *Chaucer at the Court of Edward III: Nude Study for seated Lady, 1847, pencil*
- Cat. no. 33** *Chaucer at the Court of Edward III: Nude Study of a Woman with right Arm raised, 1847, pencil*
- Cat. no. 34** *Chaucer at the Court of Edward III: Two Studies of Back of a seated Woman's Head, 1847, pencil*
- Cat. no. 35** *Chaucer at the Court of Edward III: Two Studies of a seated Woman in lost Profile Pose and from the Back, 1847, pencil*
- Cat. no. 36** *Chaucer at the Court of Edward III: Nude Study of a Woman, 1847, pencil*
- Cat. no. 37** *Chaucer at the Court of Edward III: Sketch of a Woman supporting another Figure, 1847, pencil*
- Cat. no. 38** *Chaucer at the Court of Edward III: Study of the Heads and Shoulders of two Women, 1847, pencil*
- Cat. no. 39** *Chaucer at the Court of Edward III: Drapery Study for Edward III with Outline of a Child, 1847, black chalk*

- Cat. no. 40** *Chaucer at the Court of Edward III: Foreshortened Study for Head of a Jester, 1847, pencil*
- Cat. no. 41** *Chaucer at the Court of Edward III: Head of Alexander Pope, 1847, black chalk*
- Cat. no. 42** *Chaucer at the Court of Edward III: Two Hand Studies, 1847, black chalk*
- Cat. no. 43** *Chaucer at the Court of Edward III: Study of Head of Milton copied from Sculpture, 1848, black chalk*
- Cat. no. 44** *Chaucer at the Court of Edward III: Nude Studies for the Squire and the Courtier talking to Gower, 1848, pencil*
- Cat. no. 45** *Chaucer at the Court of Edward III: Drapery Study for the Black Prince, 1848, black chalk with touches of white*
- Cat. no. 46** *Chaucer at the Court of Edward III: Three Studies of Hands, 1848, black*
- Cat. no. 47** *Chaucer at the Court of Edward III: Four Studies of Hands, 1848, black chalk touched with white*
- Cat. no. 48** *Chaucer at the Court of Edward III: Study of a clasped right Hand for one of the Poets, 1848, black chalk*
- Cat. no. 49** *Chaucer at the Court of Edward III: Study of a left Hand for Burns, 1848, black chalk heightened with touches of white*
- Cat. no. 50** *Chaucer at the Court of Edward III: Study of Drapery for Burns, 1848, black chalk*
- Cat. no. 51** *Chaucer at the Court of Edward III: Drapery Study, 1848, black chalk*
- Cat. no. 52** *Chaucer at the Court of Edward III: Drapery Study for the Black Prince, 1851, black and white chalks on brown-toned paper*
- Cat. no. 53** *Chaucer at the Court of Edward III: Study for Squire's Legs, 1851, black chalk heightened with white*
- Cat. no. 54** *Chaucer at the Court of Edward III: Two Head Studies of an old Woman, 1851, black chalk*
- Cat. no. 55** *Chaucer at the Court of Edward III: Watercolour Version, c.1851, watercolour with bodycolour*
- Cat. no. 56** *Convalescent: Portrait of Emma Madox Brown, 1872, pastel*

- Cat. no. 57** *Costume Study: Five Sketches of Armour and Costume*, 1844, brown pen and ink over pencil
- Cat. no. 58** *Costume Study: Archbishop's Dress*, 1845, brown pen and ink on tracing paper
- Cat. no. 59** *Costume Studies: French and Italian thirteenth and fourteenth-century Costumes (seven Drawings)*, 1845, brown pen and ink on tracing paper
- Cat. no. 60** *Costume Study: Seigneur de Rimini*, 1845, brown pen and ink on tracing paper
- Cat. no. 61** *Dalziels' Bible Gallery: The Death of Eglon*, 1863-1865, engraved woodblock
- Cat. no. 62** *Dalziels' Bible Gallery: The Death of Eglon*, pub. 1881, wood engraving
- Cat. no. 63** *Dalziels' Bible Gallery: The Death of Eglon*, pub. 1881, wood engraving on India paper, in bound volume
- Cat. no. 65** *Dalziels' Bible Gallery: Elijah and the Widow's Son*, 1863-1865, engraved woodblock
- Cat. no. 66** *Dalziels' Bible Gallery: Elijah and the Widow's Son*, pub. 1881, wood engraving
- Cat. no. 67** *Dalziels' Bible Gallery: Elijah and the Widow's Son*, pub. 1881, wood engraving on India paper, in bound volume
- Cat. no. 69** *Dalziels' Bible Gallery: Joseph's Coat (Compositional Sketch and four Studies for Jacob's Granddaughter)*, 1863-1865, pencil on paper
- Cat. no. 70** *Dalziels' Bible Gallery: Joseph's Coat*, 1863-1865, engraved woodblock
- Cat. no. 71** *Dalziels' Bible Gallery: Joseph's Coat*, pub. 1881, wood engraving
- Cat. no. 72** *Dalziels' Bible Gallery: Joseph's Coat*, pub. 1881, wood engraving on India paper, in bound volume
- Cat. no. 74** *Decorative Sketches: Venus Reclining on a Shell in the Midst of the Sea*, 1848-1849, brown pen and ink over pencil
- Cat. no. 75** *Decorative Design: Ornamental Pattern*, 1850, watercolour and bodycolour over pen and ink, and pencil on two sheets of paper

- Cat. no. 76** *Down Stream: Main Illustration (Last Year's First of May)*, pub. 1871, wood engraving
- Cat. no. 77** *Down Stream: Tailpiece to the Poem (This Year's First of June)*, pub. 1871, wood engraving
- Cat. no. 78** *The Establishment of Flemish Weavers in Manchester A.D. 1363: Four Studies of Parts of a Horse*, 1879-1882, black, white and red chalk on rough brown paper
- Cat. no. 79** *Female: Two Studies of young Woman in eighteenth-century Costume*, 1849, pencil
- Cat. no. 80** *Infant's Repast: Study of Mother and Child*, 1848, black and white chalk
- Cat. no. 81** *Infant's Repast: Study of Mother and Child with separate Arm and Leg Studies of the Child*, 1848, black chalk with grey wash
- Cat. no. 82** *King Lear: Sketch of Lear questioning Cordelia*, 1844, brown pen and ink over pencil
- Cat. no. 82 verso** *Alfred the Great: Compositional Sketches*, 1843-1845, pencil
- Cat. no. 83** *King Lear: Sketches of Lear imagining his unfaithful Daughters' Trial and Lear in the Storm*, 1844, brown pen and ink over pencil
- Cat. no. 83 verso** *Alfred the Great: Compositional Studies and Sketches and Chaucer at the Court of Edward III: Study of Cherubs*, 1843-1849, pencil
- Cat. no. 84** *King Lear: Kent accuses Oswald*, 1844, brown pen and ink with pencil underneath
- Cat. no. 84 verso** *King Lear: Lear recounts his Wrongs to Regan*, brown pen and ink with pencil underneath
- Cat. no. 85** *King Lear: Cordelia at Lear's Bedside (Lear's Awakening)*, 1844, brown pen and ink over pencil
- Cat. no. 87** *King Lear: Cordelia parting from her Sisters (The Germ: Art and Poetry)*, first pub. March 1850, reprinted volume, 1901, etching
- Cat. no. 88** *King René's Honeymoon: Study for Architecture*, 1861, brush and brown ink, with watercolour, over pencil on brown paper
- Cat. no. 89** *The Last of England: Cartoon*, 1852, pencil, image edged with brown ink

- Cat. no. 90** *The Last of England: Portrait of Emma Hill*, December 1852, chalks with scratching out on two sheets of paper
- Cat. no. 91** *Lear and Cordelia and The Infant's Repast: Four Studies of Hands*, 1849, black chalk
- Cat. no. 92** *Lyra Germanica - the Christian Life: Abraham and Isaac*, pub. 1868, wood engraving
- Cat. no. 93** *Lyra Germanica - the Christian Life: Finished Design for The Entombment*, 1867, black pen and ink
- Cat. no. 94** *Lyra Germanica - the Christian Life: The Entombment*, pub. 1868, wood engraving
- Cat. no. 95** *Male: Sketch of Man reclining on Steps with Hands bound together*, 1844, brown pen and ink over pencil
- Cat. no. 96** *Male: Academic nude Study, half-length with Moustache and Arms folded*, 1846-1849, black chalk
- Cat. no. 97** *Male: Academic Study of Nude holding a Staff*, 1847, pencil
- Cat. no. 98** *Male: Academic Study of Nude posed as a Sculptor*, 1847, chalk with grey wash
- Cat. no. 99** *Male: Academic Study, three-quarter length Nude, with a Moustache and clenched Fists*, 1847, black chalk
- Cat. no. 100** *Morris & Company revised Index: Catalogue of Stained Glass Cartoons by Edward Burne Jones, Ford Madox Brown, William Morris, Philip Webb, Simeon Solomon, Arthur Hughes etc.*, 1900-1940, pen and ink with pencil annotations, small photo inserts, and pen and ink drawings
- Cat. no. 101** *Morris & Company Windows Book: Photographic Album of Stained Glass Designs by Dante Gabriel Rossetti, Ford Madox Brown, William Morris, Edward Burne-Jones, Simeon Solomon and Philip Webb*, 1900-1905, photographs laid into bound volume
- Cat. no. 102** *Oure Ladye of Saturday Night: Seven Sketches*, 1846, pencil
- Cat. no. 103** *Oure Ladye of Saturday Night: Four Studies for Angel holding Child*, 1847, pencil
- Cat. no. 104** *Oure Ladye of Saturday Night: Study of Angel holding Child*, 1847, black chalk

- Cat. no. 105** *Oure Ladye of Saturday Night: Study of Arm and Hands for Angel holding Bowl of Water, 1847, black chalk*
- Cat. no. 106** *Oure Ladye of Saturday Night: Drapery Study for Angel holding Bowl of Water, 1847, black chalk*
- Cat. no. 107** *Oure Ladye of Saturday Night: Study of Head for Angel holding Bowl of Water, 1847, black chalk with rubbing and grey wash*
- Cat. no. 108** *Oure Ladye of Saturday Night: Study of Child seated on Knees of the Virgin and two separate Studies of the Child's Legs, 1847, pencil on brown-toned paper*
- Cat. no. 108 verso and** *Oure Ladye of Saturday Night: Frieze Design, c. 1847, pencil black pen and ink*
- Cat. no. 109** *Oure Ladye of Saturday Night: Three Studies of Arms and Legs of Child, 1847, pencil*
- Cat. no. 110** *Oure Ladye of Saturday Night: Three Studies of Child's Legs on Virgin's Knees, 1847, pencil*
- Cat. no. 111** *Oure Ladye of Saturday Night: Studies of Right Foot and Left Hand of Child, 1847, pencil on light brown paper*
- Cat. no. 112** *Oure Ladye of Saturday Night: Drapery Study for Virgin, 1847, black chalk*
- Cat. no. 113** *Oure Ladye of Saturday Night: Study for Head of Virgin, 1847, black chalk with wash*
- Cat. no. 114** *Parisna's Sleep: Study for Prince Azo and Parisina, 1842, black chalk with pencil side drawing*
- Cat. no. 115** *Parisina's Sleep: Study for Head of Prince Azo, 1842, black chalk with grey wash*
- Cat. no. 116** *Parisina's Sleep: Study for the Head of Parisina, 1842, black and white chalk with grey wash*
- Cat. no. 117** *Poets of the Nineteenth Century: The Prisoner of Chillon: Compositional Sketch, 1856, pencil*
- Cat. no. 117 verso** *Profile of a Man's left Eye and Nose, c.1856, pencil*
- Cat. no. 118** *Poets of the Nineteenth Century: The Prisoner of Chillon: Study of a Corpse, 1856, pencil*
- Cat. no. 118 verso** *Designs for Decoration, c.1856, pencil*

- Cat. no. 119** *Poets of the Nineteenth Century: The Prisoner of Chillon*, pub. 1857, wood engraving
- Cat. no. 120** *Portrait: Ford Madox Brown*, c.1865, After Elliott & Fry albumen *carte de visite*, modern photographic print - image unavailable
- Cat. no. 121** *Portrait: Thomas Carlyle*, c.1859, albumen print possibly by Charles Thurston Thompson
- Cat. no. 122** *Portrait: Head Study of Daniel Casey (three-quarter view)*, 1848, black chalk
- Cat. no. 123** *Portrait: Head Study of Daniel Casey (full-face)*, 1848, black chalk
- Cat. no. 124** *Portrait: Miss Iza Duffus Hardy*, 1872, pastel and coloured chalks on brown paper
- Cat. no. 125** *Portrait: Emma Hill (later Mrs Madox Brown)*, 1848, black chalk
- Cat. no. 126** *Portrait: Emma Hill (later Mrs Madox Brown)*, 1852, pencil
- Cat. no. 127** *Portrait: Mrs Madox Brown (née Emma Hill)*, 9 May 1854, pencil
- Cat. no. 128** *The Repose in Egypt: Compositional Sketch*, 1847, pencil
- Cat. no. 129** *Sculpture: Study of a Statue of the 'Discobolus,'* 1845, black chalk
- Cat. no. 130** *William Shakespeare: Study*, 1849-1850, pencil
- Cat. no. 131** *William Shakespeare: Invitation Card*, 1850, wood engraving
- Cat. no. 132** *The Spirit of Justice: Study for Baron and his Advisor, with Sketches of Erudition and Wisdom*, 1844-1845, brown pen and ink over pencil
- Cat. no. 133** *The Spirit of Justice: Drapery Study for Erudition*, 1844-1845, black chalk
- Cat. no. 133 verso** *Drapery Study and Sketch of two Legs*, black chalk
- Cat. no. 134** *The Spirit of Justice: Study for Wisdom*, 1844-1845, black chalk with grey wash
- Cat. no. 135** *The Spirit of Justice: Study for Head of the Baron*, 1844-1845, black chalk

- Cat. no. 136** *The Spirit of Justice: Study for the Head of central Bishop, 1844-1845, black chalk*
- Cat. no. 137** *The Spirit of Justice: Study for the Head of a Bishop, 1844-1845, black chalk with grey wash*
- Cat. no. 138** *The Spirit of Justice: Study for the uplifted left Arm of Justice, 1844-1845, black chalk*
- Cat. no. 139** *The Spirit of Justice: Study for Head of Counsellor in a Coronet, 1844-1845, black chalk with touches of blue chalk*
- Cat. no. 140** *The Spirit of Justice: Study for Head of Counsellor, 1844-1845, black chalk*
- Cat. no. 141** *The Spirit of Justice: Drapery Study for central Bishop, 1844-1845,*
- Cat. no. 141 verso** *Part of a Drapery Study, 1844-1845, black chalk*
- Cat. no. 142** *The Spirit of Justice: Study for Head of Widow, 1844-1845, black chalk*
- Cat. no. 143** *Stages of Cruelty: Study for the Child (Catherine Madox Brown), 1857, black chalk on pale grey paper*
- Cat. no. 144** *Stained Glass Design: Christ Blessing little Children, 1862, after Ford Madox Brown, brush, ink and wash over pencil, squared up for transfer*
- Cat. no. 145** *Stained Glass Design: Cartoon for Zachariah, The High Priest, 1872, black chalk*
- Cat. no. 146** *Stained Glass Design: Cartoon for The Young Milton, 1874, black chalk*
- Cat. no. 147** *Stained Glass Design: Cartoon for St Simon, 1874, black chalk*
- Cat. no. 148** *Stained Glass Design: The Marriage of Editha with Sigtrygg, King of Northumbria (St Editha's Tamworth, Staffordshire), copy by Thomas Matthews Rooke, 1909, watercolour*
- Cat. no. 149** *Stained Glass Design: St Editha and the Nuns of St Mary (St Editha's Tamworth, Staffordshire), copy by Thomas Matthews Rooke, 1909, watercolour*
- Cat. no. 150** *Stained Glass Design: William the Conqueror presenting a charter to Lord Marmion, and Sleeping Lord Marmion being poked by St. Editha (St Editha's, Tamworth, Staffordshire), copy by Thomas Matthews Rooke, 1909, watercolour*

- Cat. no. 151** *Sterne's 'Sentimental Journey': Study for Yorick and La Fleur talking to Maria's Mother, 1842, brown pen and ink over pencil*
- Cat. no. 151 verso** *The Body of Harold brought before William the Conqueror: Eight Sketches of Figure Groups, c.1844, pencil*
- Cat. no. 152** *Sterne's 'Sentimental Journey': Yorick (Laurence Sterne) and Maria Walking, 1842, pen and ink, watercolour and bodycolour over pencil*
- Cat. no. 153** *Study of Tree Trunk with Roots, c.1847, black chalk, heightened with white chalk on buff paper*
- Cat. no. 153 verso** *Two Studies of Tree Trunks, c.1846, black chalk*
- Cat. no. 154** *Unknown Subject: Compositional Sketch, 1843-1850, pencil*
- Cat. no. 155** *Wycliffe reading his Translation of the Bible: Nude Study for Chaucer, 1847, pencil*
- Cat. no. 156** *Wycliffe reading his Translation of the Bible: Study for Chaucer, 1847, pencil*
- Cat. no. 157** *Wycliffe reading his Translation of the Bible: Nude Study of Gower, 1847, pencil*
- Cat. no. 158** *Wycliffe reading his Translation of the Bible: Study for Gower, 1847, pencil*
- Cat. no. 159** *Wycliffe reading his Translation of the Bible: Nude Study for John of Gaunt and Chaucer's right Hand, 1847, pencil and black chalk*
- Cat. no. 160** *Wycliffe reading his Translation of the Bible: Study of John of Gaunt and Chaucer's Left Hand, 1847, pencil and black chalk*
- Cat. no. 161** *Wycliffe reading his Translation of the Bible: Study for Wycliffe, 1847, black chalk*
- Cat. no. 162** *Wycliffe reading his Translation of the Bible: Nude Study for Wycliffe, 1847, pencil*
- Cat. no. 163** *Wycliffe reading his Translation of the Bible: Drapery Study for Wycliffe, 1847, black chalk*
- Cat. no. 164** *Wycliffe reading his Translation of the Bible: Drapery Study for Chaucer, 1848, black chalk*

- Cat. no. 165** *Wycliffe reading his Translation of the Bible: Study of Legs for John of Gaunt and two Studies of Feet for Wycliffe, 1848, black chalk*
- Cat. no. 166** *Wycliffe Reading his Translation of the Bible: Studies of Hands for John of Gaunt and Gower, 1847, black chalk*
- Cat. no. 167** *Wycliffe reading his Translation of the Bible: Study for Head of Wycliffe, 1847, pencil*
- Cat. no. 168** *Wycliffe reading his Translation of the Bible: Study for Constance and Child, 1847, pencil*
- Cat. no. 169** *Wycliffe reading his Translation of the Bible: Unfinished Study for Head of Constance, 1847-48, pencil*
- Cat. no. 170** *Wycliffe reading his Translation of the Bible: Portrait of Elizabeth Bamford modelling for Constance, 1848, pencil*
- Cat. no. 171** *Wycliffe reading his Translation of the Bible: Study for Head of Constance, 1848, chalk over pencil*
- Cat. no. 172** *Wycliffe reading his Translation of the Bible: Study for Head of Chaucer, 1848, pencil*
- Cat. no. 173** *Wycliffe reading his Translation of the Bible: Study of Monk representing the Catholic Faith, 1848, black chalk with brown pen and ink, squared up*
- Cat. no. 174** *Wycliffe reading his Translation of the Bible: Study of young Woman representing the Protestant Faith, 1848, black chalk*

The Illustrations (figures 1 – 182) are not available in the web version of this thesis.

They are included in the original printed copy of the thesis, housed in the University of Birmingham Library.

These Catalogue Illustrations (Cat. no. 1 – 174) are reproduced with the kind permission of Birmingham Museums and Art Gallery.

These are low-resolution images for reference purposes only. The original printed copy of the thesis, housed in the University of Birmingham Library, contains high-resolution images.

They can also be accessed via the Birmingham Museums and Art Gallery Pre-Raphaelite Online Resource at <http://www.preraphaelites.org/> *.

Further distribution or reproduction in any format is prohibited without the permission of the owners.

* Accessed January 2010

CATALOGUE ILLUSTRATIONS



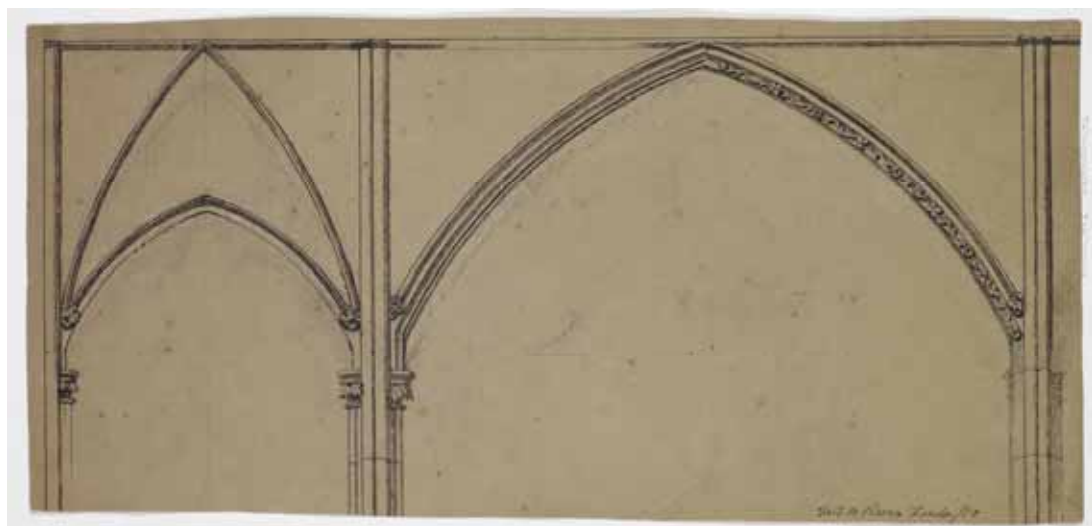
Cat. no. 1 Alfred the Great: Sketch of Alfred drawing in the Sand, 1843 - 1845



Cat. no. 1 verso Historical Notes and Sketches of Alfred the Great, 1843 - 1850



Cat. no. 2 *Angels watching the Crown of Thorns: Study of clasped Hands, 1846*



Cat. no. 3 *Architecture: Study of Gothic Arches and 14th Century Vaulting, c. 1847*



Cat. no. 4 *The Ascension*, 1844 - 1900



Cat. no. 5 *The Ascension:*
Study of Angels and Hands, 1844



Cat. no. 6 *The Ascension:*
Study of a Group of Angels, 1844



Cat. no. 7 *The Ascension: Study of a Group of six flying Angels, 1844*



Cat. no. 7 verso *Two nude Angels holding onto each other, 1844*



Cat. no. 8 *The Ascension: Study for a kneeling Apostle, 1844*



Cat. no. 8 verso *Head of a Child, 1844*



Cat. no. 9 *The Ascension: Drapery Study of a praying Apostle, 1844*



Cat. no. 9 verso *The Spirit of Justice: Seated Figure in ecclesiastical Robes, gripping a Staff with left Hand raised in a Blessing, 1844*



Cat. no. 10 *The Ascension:*
Study for an Apostle, 1844



Cat. no. 10 verso: *The Spirit of Justice:*
Body of seated Figure in ecclesiastical
Robes holding a Staff and a Book, 1844



Cat. no. 11 *The Ascension:*
Study of an Apostle, 1844



Cat. no. 11 verso *Full-length Sketch*
of a standing, naked Child, 1844



Cat. no. 12 *The Ascension: Study for Christ, 1844*



Cat. no. 13 *Caricature: Composite*
Drawing: A Stunner, 1861 - 1863



Cat. no. 13 *verso A Victorian Woman*
in her Underwear, 1861-1863



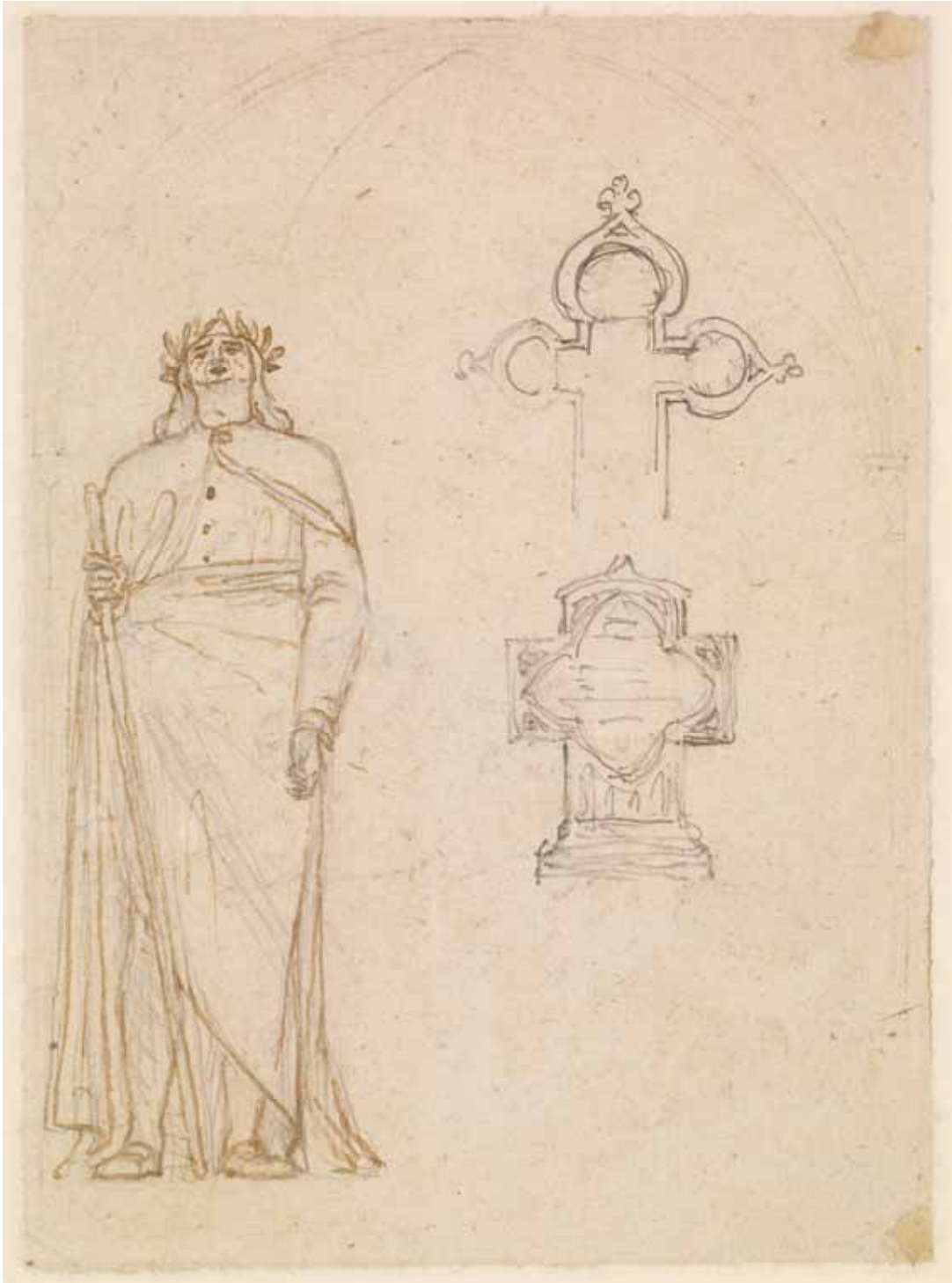
Cat. no. 14 *Caricature: Composite*
Drawing: Bewigged Head, 1861 - 1863



Cat. no. 14 verso *Bowed Head of a*
bearded Man, 1861-1863



Cat. no. 15 *Chaucer at the Court of Edward III: Early compositional Study, 1845*



Cat. no. 15 verso *Chaucer at the Court of Edward III: Study for Milton and two Designs for Tombstones, 1845-1846*



Cat. no. 15a *Chaucer at the Court of Edward III: Tracing of the Figure of Milton, c. 1845 – c. 1849*



Cat. no. 15b *Chaucer at the Court of Edward III: Tracing of a Gothic Arch, c. 1845 – c. 1849*



Cat. no. 16 *Chaucer at the Court of Edward III: Early compositional Study, 1845*



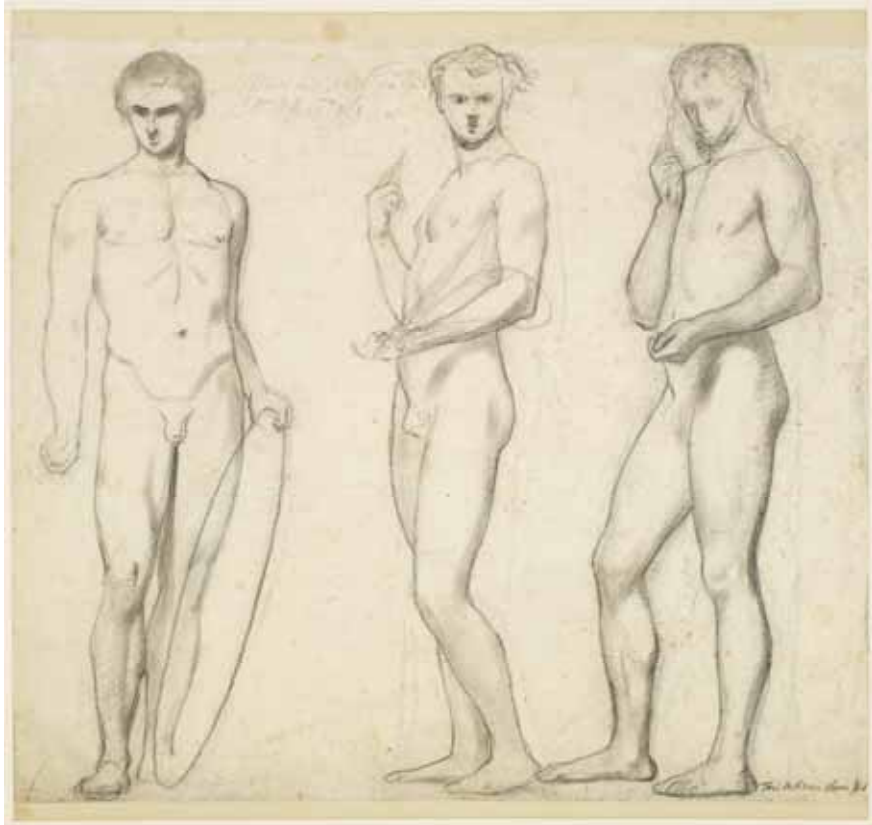
Cat. no. 17 *Chaucer at the Court of Edward III:
Nude Studies of two Boys, 1845*



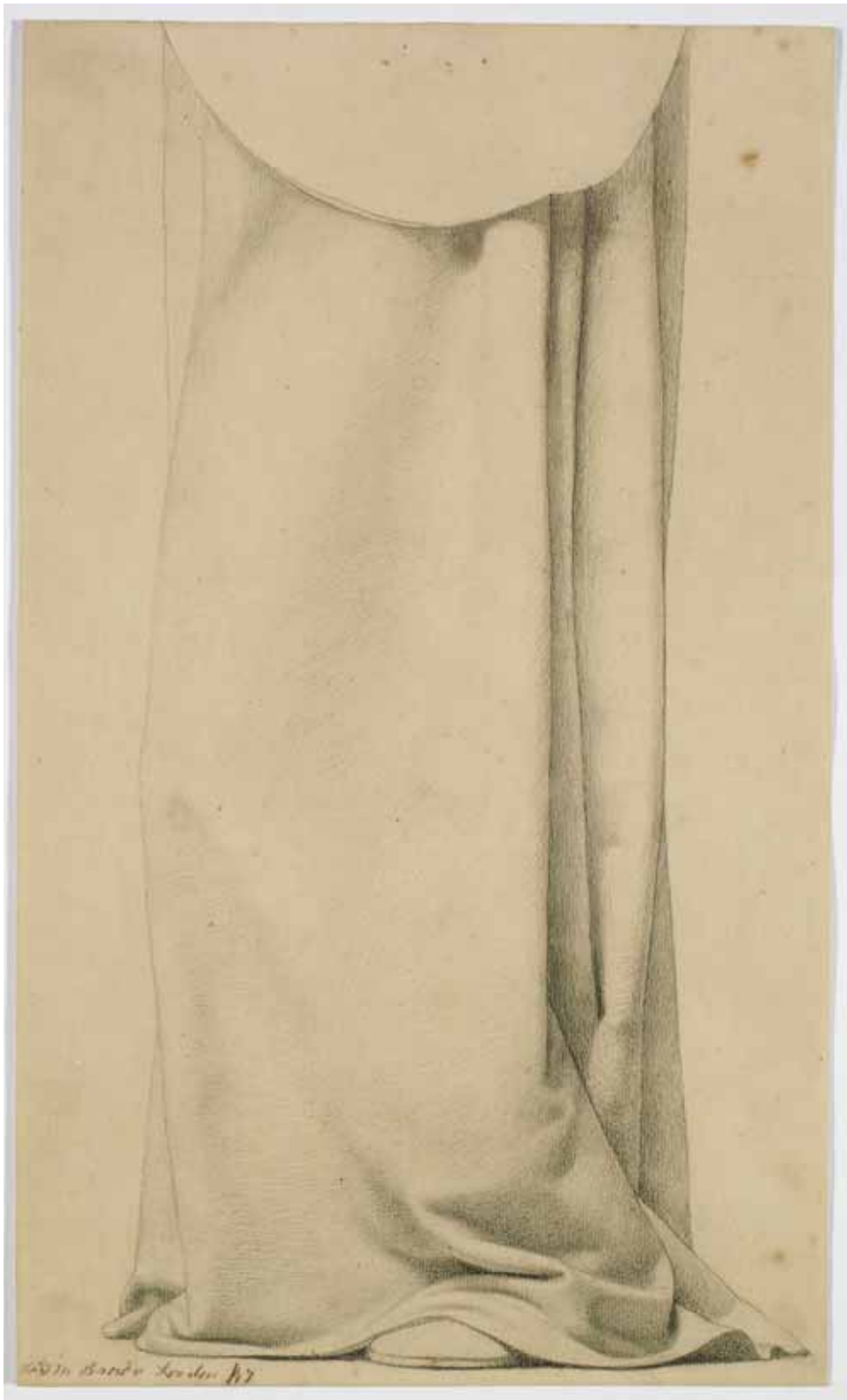
Cat. no. 18 *Chaucer at the Court of Edward III:
Nude Studies of four Figures, 1845*



Cat. no. 19 *Chaucer at the Court of Edward III: Eight early Studies of Figures and Hands, 1845*



Cat. no. 20 *Chaucer at the Court of Edward III: Nude Studies for the Figures of Byron, Shakespeare and Burns, 1845*



Cat. no. 21 *Chaucer at the Court of Edward III:
Drapery Study for Burns, 1847*



Cat. no. 22 *Chaucer at the Court of Edward III: Study of a right Leg and left Foot for Milton, 1847*



Cat. no. 23 *Chaucer at the Court of Edward III: Study of a left Leg for Shakespeare, 1847*



Cat. no. 24 *Chaucer at the Court of Edward III: Study of Drapery for Milton, 1847*



Cat. no. 25 *Chaucer at the Court of Edward III: Drapery Study for Shakespeare, 1847*



Cat. no. 26 *Chaucer at the Court of Edward III:
Study of a Man in a mediaeval Hood, 1847*



Cat. no. 27 *Chaucer at the Court of Edward III:
Study for the Cardinal, 1847*



Cat. no. 28 *Chaucer at the Court of Edward III: Drapery Study in Profile for Courtier*, 1847



Cat. no. 29 *Chaucer at the Court of Edward III: Drapery Study*, 1847



Cat. no. 30 *Chaucer at the Court of Edward III: Female Nude Study of a Muse holding onto a Rail, 1847*



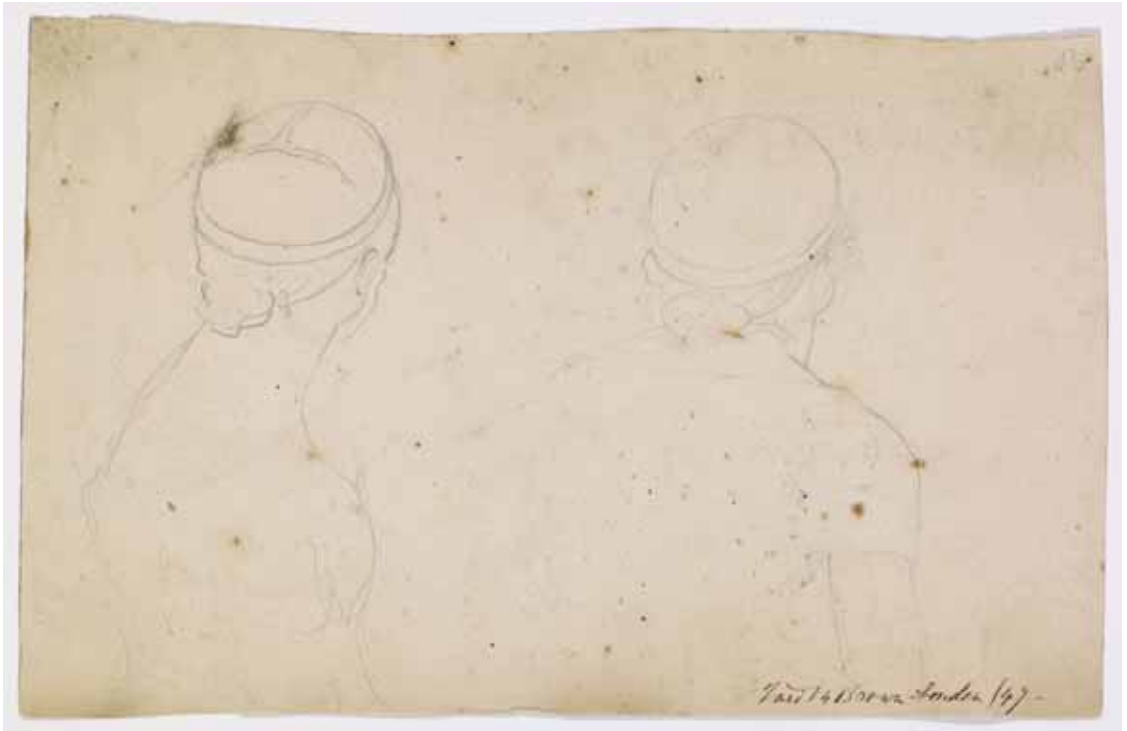
Cat. no. 31 *Chaucer at the Court of Edward III: Female Nude: Study of a Muse, 1847*



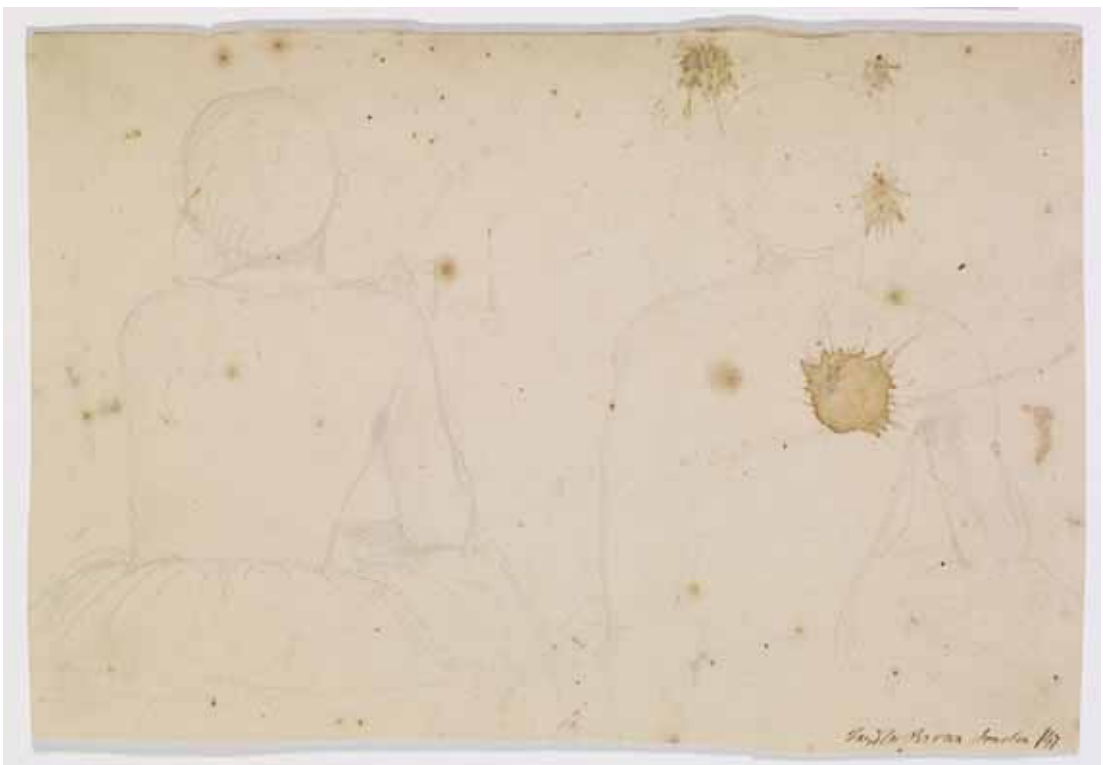
Cat. no. 32 *Chaucer at the Court of Edward III:
Nude Study for seated Lady, 1847*



Cat. no. 33 *Chaucer at the Court of Edward III:
Nude Study of a Woman with right Arm raised, 1847*



Cat. no. 34 *Chaucer at the Court of Edward III:
Two Studies of Back of a seated Woman's Head, 1847*



Cat. no. 35 *Chaucer at the Court of Edward III: Two Studies of a seated Woman in
lost Profile Pose and from the Back, 1847*



Cat. no. 36 *Chaucer at the Court of Edward III:
Nude Study of a Woman, 1847*



Cat. no. 37 *Chaucer at the Court of Edward III:*
Sketch of a Woman supporting another Figure, 1847



Cat. no. 38 *Chaucer at the Court of Edward III:*
Study of the Heads and Shoulders of two Women, 1847



Cat. no. 39 *Chaucer at the Court of Edward III:
Drapery Study for Edward III with Outline of a Child, 1847*



Cat. No. 40 *Chaucer at the Court of Edward III:
Foreshortened Study for Head of a Jester, 1847*



Cat. No. 41 *Chaucer at the Court of Edward III:
Head of Alexander Pope, 1847*



Cat. No. 42 *Chaucer at the Court of Edward III:
Two Hand Studies, 1847*



Cat. No. 43 *Chaucer at the Court of Edward III:*
Study of Head of Milton copied from Sculpture, 1848



Cat. No. 44 *Chaucer at the Court of Edward III:*
Nude Studies for the Squire and the Courtier talking to Gower, 1848



Cat. No. 45 *Chaucer at the Court of Edward III:
Drapery Study for the Black Prince, 1848*



Cat. No. 46 *Chaucer at the Court of Edward III: Three Studies of Hands, 1848*



Cat. No. 47 *Chaucer at the Court of Edward III: Four Studies of Hands, 1848*



Cat. No. 48 *Chaucer at the Court of Edward III:*
Study of a clasped right Hand for one of the Poets, 1848



Cat. No. 49 *Chaucer at the Court of Edward III:*
Study of a left Hand for Burns, 1848



Cat. No. 50 *Chaucer at the Court of Edward III:
Study of Drapery for Burns, 1848*



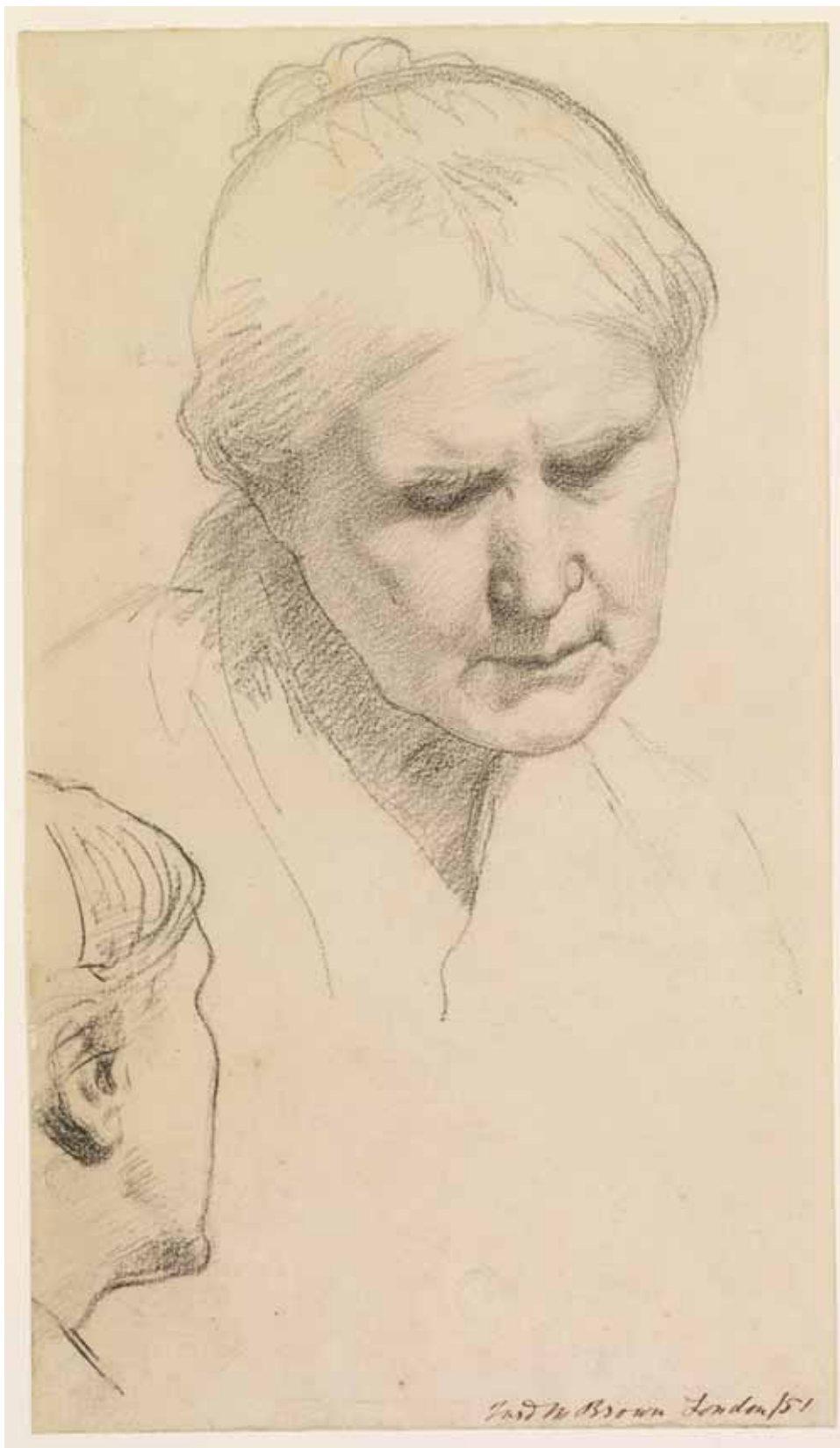
Cat. No. 51 *Chaucer at the Court of Edward III:
Drapery Study, 1848*



Cat. No. 52 *Chaucer at the Court of Edward III:
Drapery Study for the Black Prince, 1851*



Cat. No. 53 *Chaucer at the Court of Edward III: Study for Squire's Legs*, 1851



Cat. No. 54 *Chaucer at the Court of Edward III:
Two Head Studies of an old Woman, 1851*



Cat. no. 55 *Chaucer at the Court of Edward III: Watercolour Version, c. 1851*



Cat. no. 56 *Convalescent: Portrait of Emma Madox Brown, 1872*



Cat. no. 57 *Costume Study: Five Sketches of Armour and Costume, 1844*



Cat. no. 58 *Costume Study: Archbishop's Dress, 1845*



Cat. no. 59 *Costume Studies: French and Italian thirteenth and fourteenth-century Costumes (Seven Drawings), 1845*



Cat. no. 60 *Costume Study: Seigneur de Rimini, 1845*



Cat. no. 61 *Dalziels' Bible Gallery: The Death of Eglon, 1863-1865*



Cat. no. 62 *Dalziel's Bible Gallery: The Death of Eglon*, pub. 1881



Cat. no. 63 *Dalziels' Bible Gallery: The Death of Eglon*, pub. 1881



Cat. no. 65 *Dalziels' Bible Gallery: Elijah and the Widow's Son, 1863-1865*



Cat. no. 66 Dalziels' Bible Gallery: *Elijah and the Widow's Son*, pub. 1881



Cat. no. 67 Dalziels' Bible Gallery: *Elijah and the Widow's Son*, pub. 1881



Cat. no. 69 Dalziels' Bible Gallery: *Joseph's Coat: Compositional Sketch and four Studies for Jacob's Granddaughter*, 1863 - 1865



Cat. no.70 *Dalziels' Bible Gallery: Joseph's Coat, 1863-1865*



Cat. no. 71 *Dalziels' Bible Gallery: Joseph's Coat, pub. 1881*



Cat. no. 72 *Dalziel's Bible Gallery: Joseph's Coat*, pub. 1881



Cat. no. 74 *Decorative Sketches: Venus Reclining on a Shell in the Midst of the Sea, 1848 - 1849*



Cat. no. 75 *Decorative Design: Ornamental Pattern, 1850*



Cat. no. 76 *Down Stream: Main Illustration*
(*Last Year's First of May*), pub. 1871



Cat. no. 77 *Down Stream: Tailpiece to the Poem*
(*This Year's First of June*), pub. 1871



Cat. no. 78 *The Establishment of Flemish Weavers in Manchester A.D. 1363:
Four Studies of Parts of a Horse, 1879 - 1882*



Cat. no. 79 *Female: Two Studies of young Woman
in eighteenth-century Costume, 1849*



Cat. no. 80 *Infant's Repast: Study of Mother and Child, 1848*



Cat. no. 81 *Infant's Repast: Study of Mother and Child with separate Arm and Leg Studies of the Child, 1848*



Cat. no. 82 *King Lear: Sketch of Lear questioning Cordelia, 1844*



Cat. no. 82 verso *Alfred the Great: Compositional Sketches, 1843 - 1845*



Cat. no. 83 *King Lear: Sketches of Lear imagining his unfaithful Daughters' Trial and Lear in the Storm, 1844*



Cat. no. 83 verso *Alfred the Great: Compositional Studies and Sketches and Chaucer at the Court of Edward III: Study of Cherubs, 1843 - 1849*



Cat. no. 84 *King Lear: Kent accuses Oswald, 1844*



Cat. no. 84 verso *King Lear: Lear recounts his Wrongs to Regan*



Cat. no. 85 *King Lear: Cordelia at Lear's Bedside*
(*Lear's Awakening*), 1844



Cat. no. 87 *King Lear: Cordelia parting from her Sisters*
(*The Germ: Art and Poetry*), first pub. March 1850



Cat. no. 88 *King René's Honeymoon:*
Study for Architecture, 1861



Cat. no. 89 *The Last of England: Cartoon, 1852*



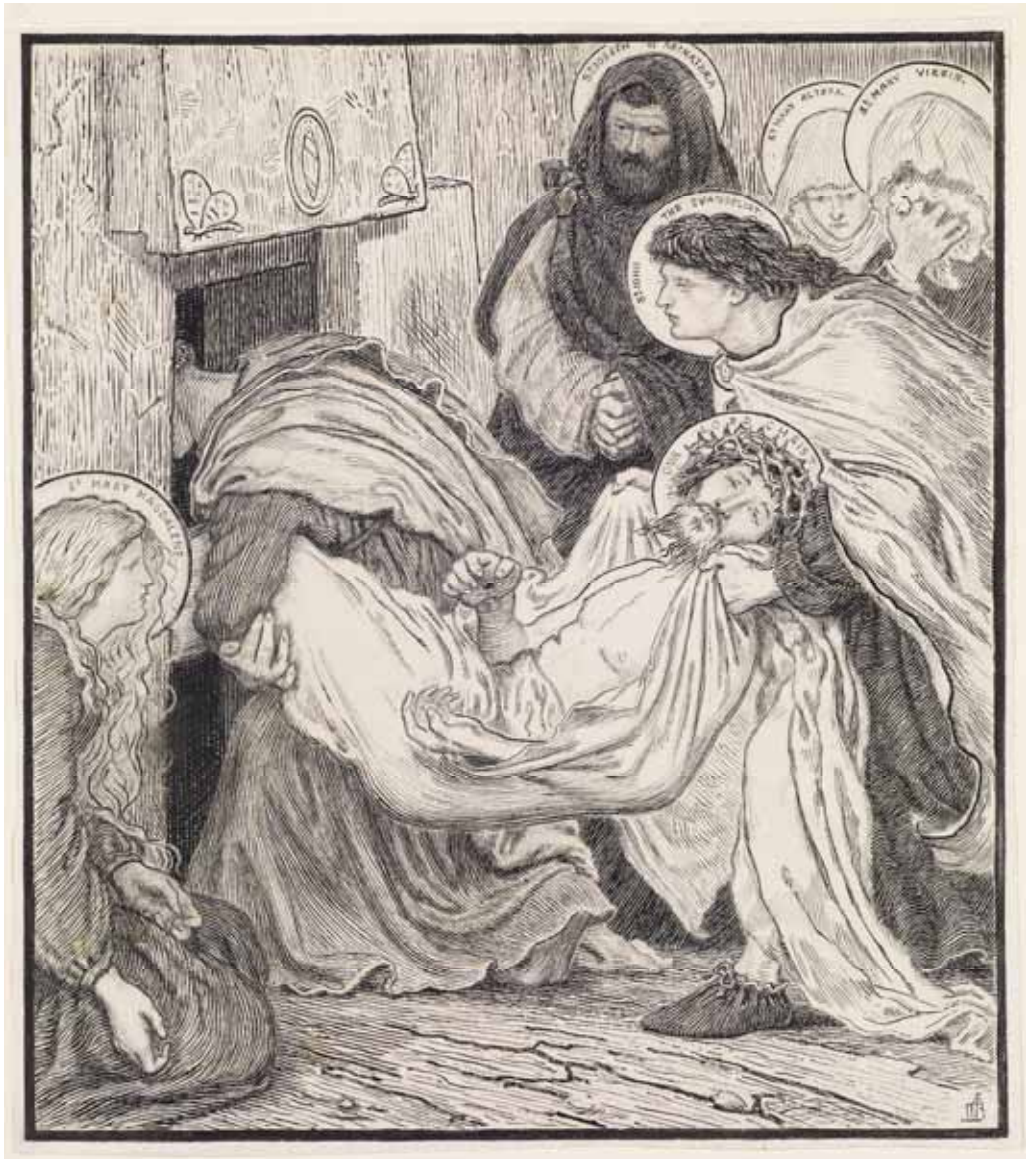
Cat. no. 90 *The Last of England: Portrait of Emma Hill*, December 1852



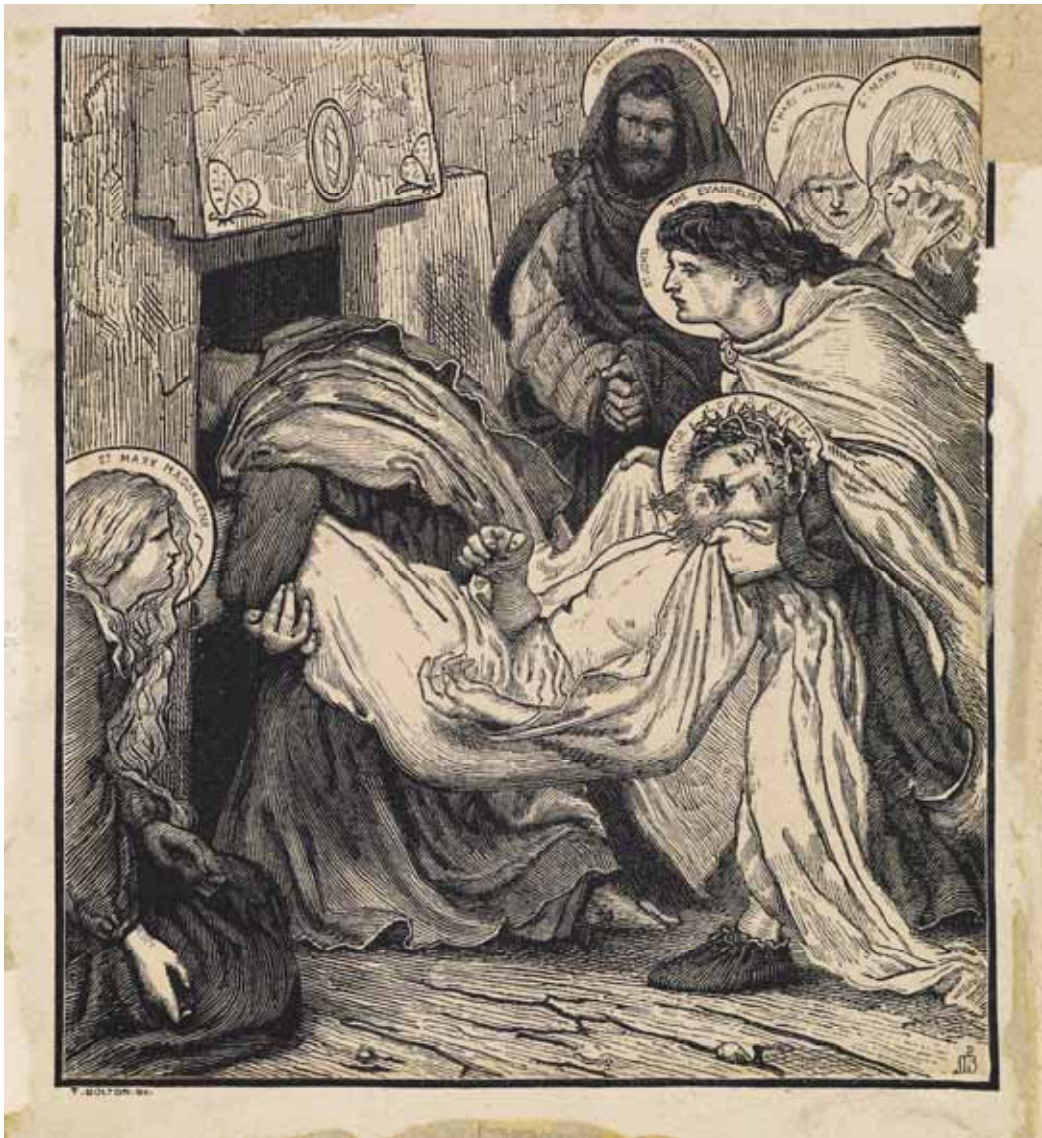
Cat. no. 91 *Lear and Cordelia and The Infant's Repast:
Four Studies of Hands, 1849*



Cat. no. 92 *Lyra Germanica - the Christian Life:*
Abraham and Issac, pub. 1868



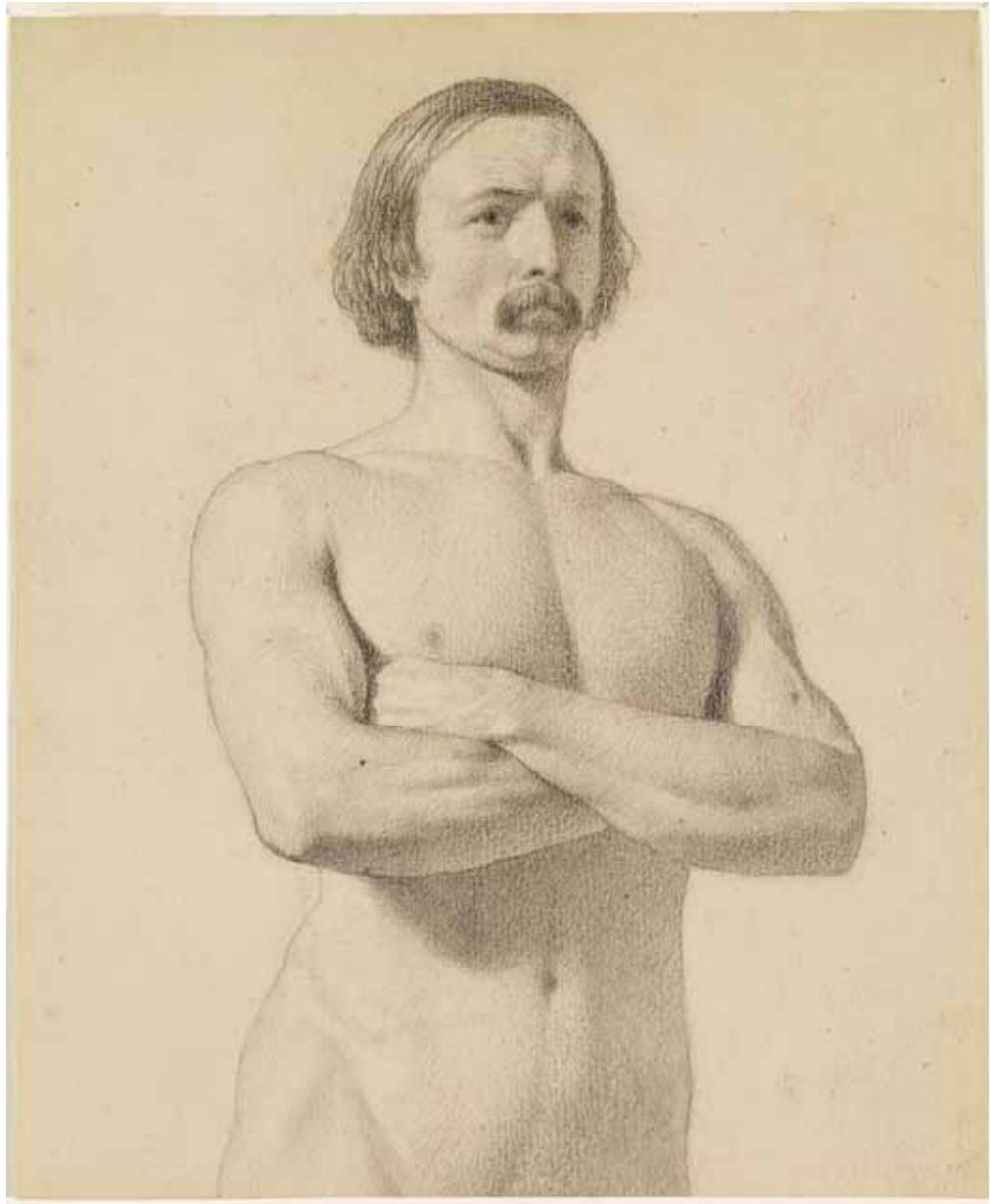
Cat. no. 93 *Lyra Germanica - the Christian Life:*
Finished Design for The Entombment, 1867



Cat. no. 94 *Lyra Germanica - the Christian Life: The Entombment*, pub. 1868



Cat. no. 95 *Male: Sketch of Man reclining on Steps
with Hands bound together, 1844*



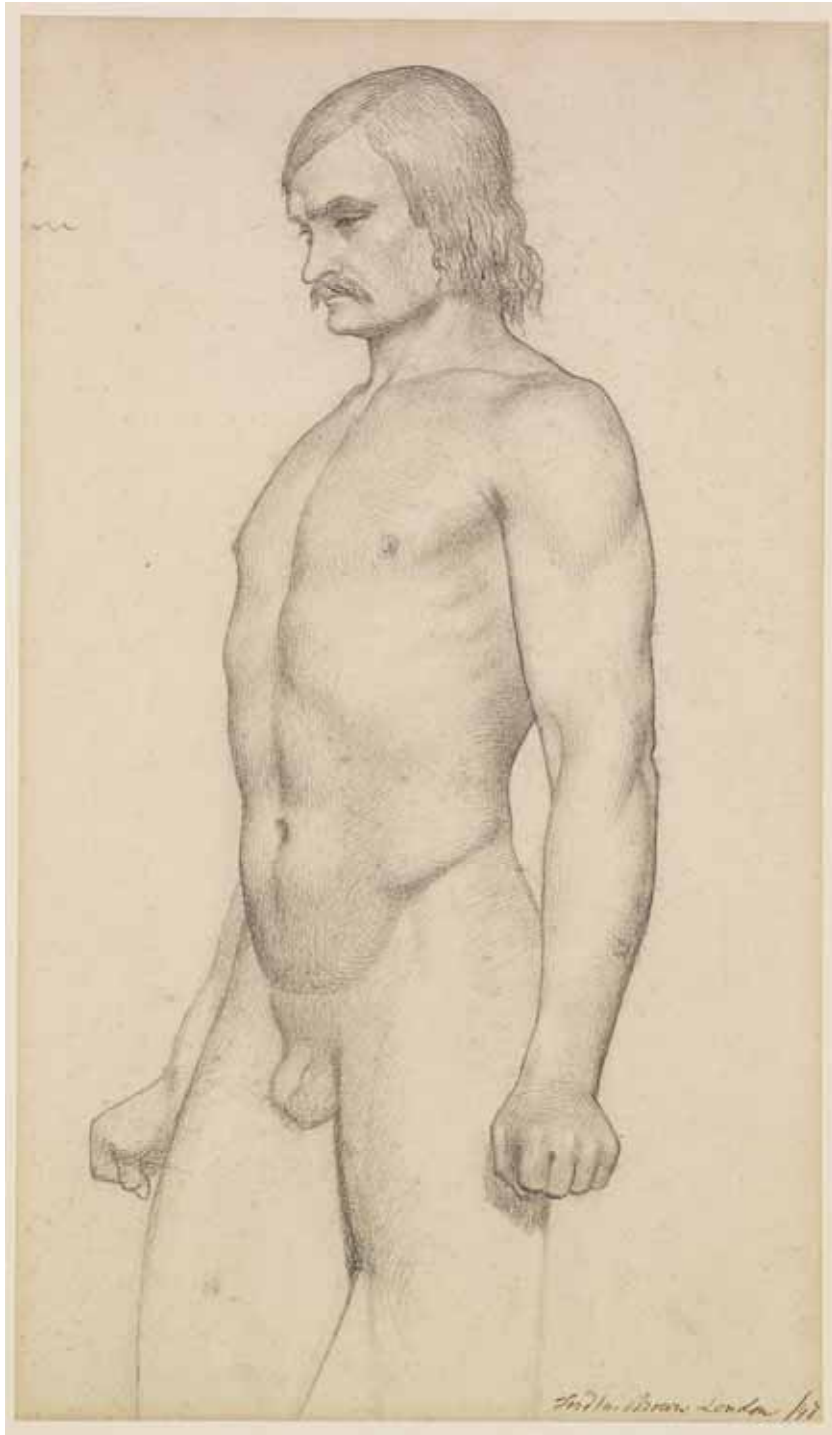
Cat. no. 96 *Male: Academic nude Study, half-length with
Moustache and Arms folded, 1846 - 1849*



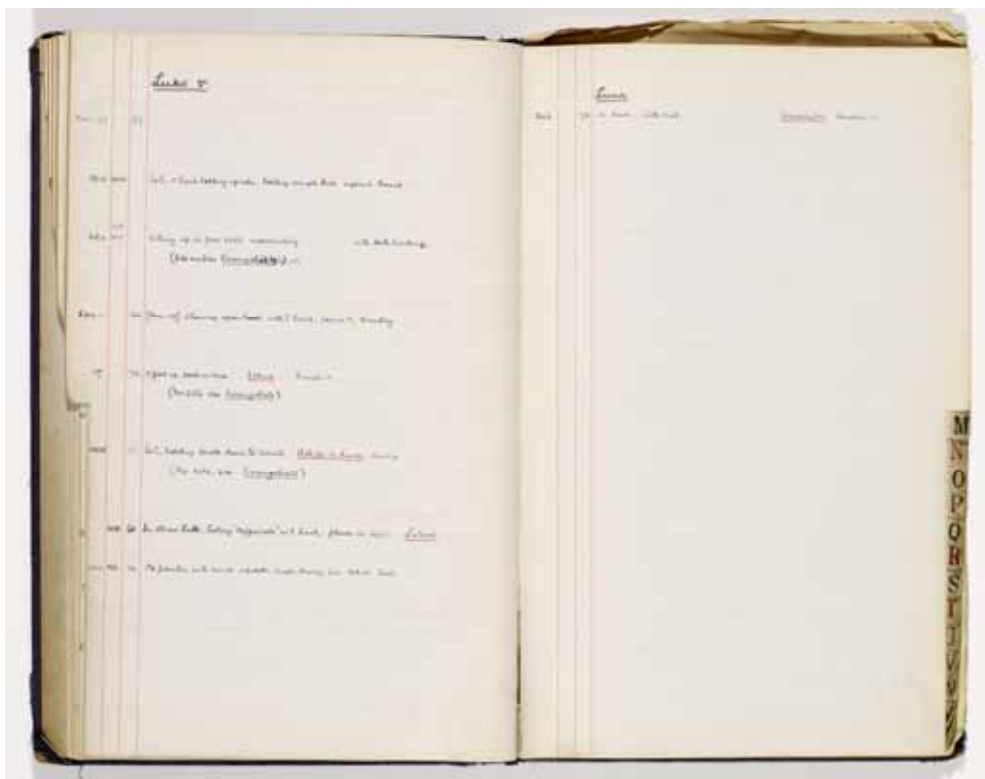
Cat. no. 97 *Male: Academic Study of
Nude holding a Staff, 1847*



Cat. no. 98 *Male: Academic Study of
Nude posed as a Sculptor, 1847*



Cat. no. 99 *Male: Academic Study, three-quarter length
Nude, with a Moustache and clenched Fists, 1847*



Cat. no. 100 *Morris & Company revised Index: Catalogue of Stained Glass Cartoons, 1900 - 1940*



Cat. no. 101 *Morris & Company Windows Book: Photographic Album of Stained Glass Designs, 1900-1905*



Cat. no. 102 *Oure Ladye of Saturday Night: Seven Sketches, 1846*



Cat. no. 103 *Oure Ladye of Saturday Night:*
Four Studies for Angel holding Child, 1847



Cat. no. 104 *Oure Ladye of Saturday Night: Study of Angel holding Child, 1847*



Cat. no. 105 *Oure Ladye of Saturday Night: Study of Arm and Hands for Angel holding Bowl of Water, 1847*



Cat. no. 106 *Oure Ladye of Saturday Night: Drapery Study
for Angel holding Bowl of Water, 1847*



Cat. no. 107 *Oure Ladye of Saturday Night: Study of
Head for Angel holding Bowl of Water, 1847*



Cat. no. 108 *Oure Ladye of Saturday Night: Study of Child seated on Knees of the Virgin and two separate Studies of the Child's Legs, 1847*



Cat. no. 108 verso *Oure Ladye of Saturday Night: Frieze Design, 1847*



Cat. no. 109 *Oure Ladye of Saturday Night:*
Three Studies of Arms and
Legs of Child, 1847



Cat. no. 110 *Oure Ladye of Saturday Night:*
Three Studies of Child's Legs
on Virgin's Knees, 1847



Cat. no. 111 *Oure Ladye of Saturday Night: Studies of*
Right Foot and Left Hand of Child, 1847



Cat. no. 112 *Oure Ladye of Saturday Night: Drapery Study for Virgin, 1847*



Cat. no. 113 *Oure Ladye of Saturday Night: Study for Head of Virgin, 1847*



Cat. no. 114 *Parisina's Sleep: Study for Prince Azo and Parisina*, 1842



Cat. no. 115 *Parisina's Sleep: Study for Head of Prince Azo*, 1842



Cat. no. 116 *Parisina's Sleep: Study for the Head of Parisina, 1842*



Cat. no. 117 *Poets of the Nineteenth Century:*
The Prisoner of Chillon : Compositional Sketch, 1856



Cat. no. 117 verso *Profile of a Man's left Eye and Nose, c. 1856*



Cat. no. 118 *Poets of the Nineteenth Century:*
The Prisoner of Chillon: Study of a Corpse, 1856



Cat. no. 118 verso *Designs for Decoration*



Cat. no. 119 *Poets of the Nineteenth Century: The Prisoner of Chillon*, pub. 1857



Cat. no. 121 *Portrait: Thomas Carlyle, c.1859*



Cat. no. 122 *Portrait: Head Study of Daniel Casey (three-quarter view), 1848*



Cat. no. 123 *Portrait: Head Study of Daniel Casey (full-face), 1848*



Cat. no. 124 *Portrait: Miss Iza Duffus Hardy, 1872*



Cat. no. 125 *Portrait: Emma Hill (later Mrs Madox Brown), 1848*



Cat. no. 126 *Portrait: Emma Hill (later Mrs Madox Brown), 1852*



Cat. no. 127 *Portrait: Mrs Madox Brown (née Emma Hill), 9 May 1854*



Cat. no. 128 *The Repose in Egypt: Compositional Sketch, 1847*



Cat. no. 129 *Sculpture: Study of a Statue of the 'Discobolus,' 1845*



Cat. no. 130 *William Shakespeare:*
Study, 1850



Cat. no. 131 *William Shakespeare:*
Invitation Card, 1850



Cat. no. 132 *The Spirit of Justice: Study for Baron and his Advisor, with Sketches of Erudition and Wisdom, 1844-45*



Cat. no. 133 *The Spirit of Justice: Drapery Study for Erudition, 1844 - 1845*



Cat. no. 133 verso *Drapery Study and Sketch of two Legs*



Cat. no. 134 *The Spirit of Justice:*
Study for Wisdom, 1844 - 1845



Cat. no. 135 *The Spirit of Justice:*
Study for Head of the Baron, 1844 - 18 45



Cat. no. 136 *The Spirit of Justice: Study for the Head of central Bishop, 1844 - 1845*



Cat. no. 137 *The Spirit of Justice: Study for the Head of a Bishop, 1844 - 1845*



Cat. no. 138 *The Spirit of Justice:*
Study for the uplifted left Arm of Justice, 1844 -18 45



Cat. no. 139 *The Spirit of Justice: Study for Head of Counsellor in a Coronet, 1844 - 1845*



Cat. no. 140 *The Spirit of Justice: Study for Head of Counsellor, 1844 - 1845*



Cat. no. 141 *The Spirit of Justice: Drapery Study for central Bishop, 1844 - 1845*



Cat. no. 141 verso *Part of a Drapery Study*



Cat. no. 142 *The Spirit of Justice: Study for Head of Widow, 1844 - 1845*



Cat. no. 143 *Stages of Cruelty: Study for the Child*
(Catherine Madox Brown), 1857



Cat. no. 144 *Stained Glass Design: Christ Blessing little Children, 1862*



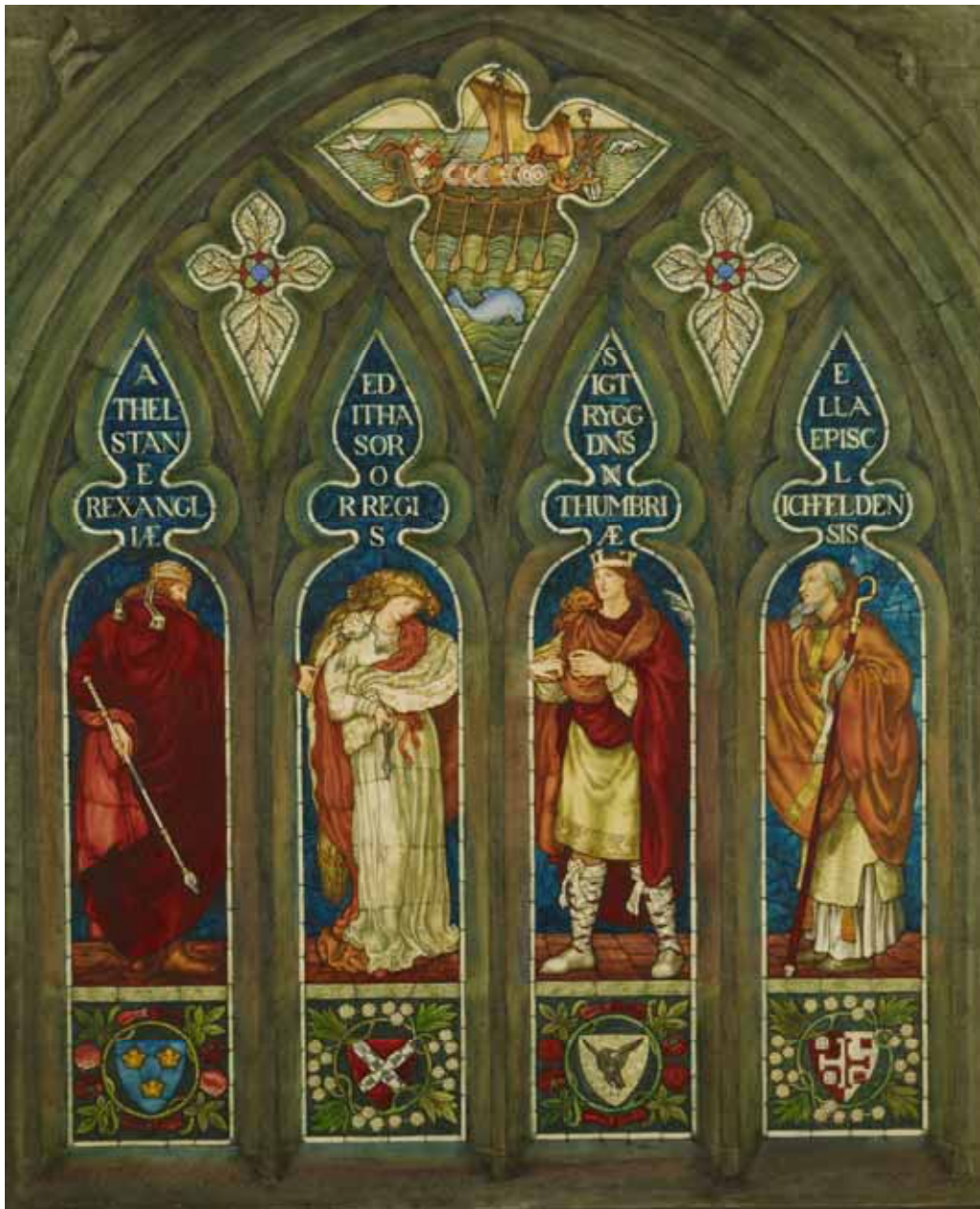
Cat. no. 145 *Stained Glass Design:*
Cartoon for Zachariah,
The High Priest, 1872



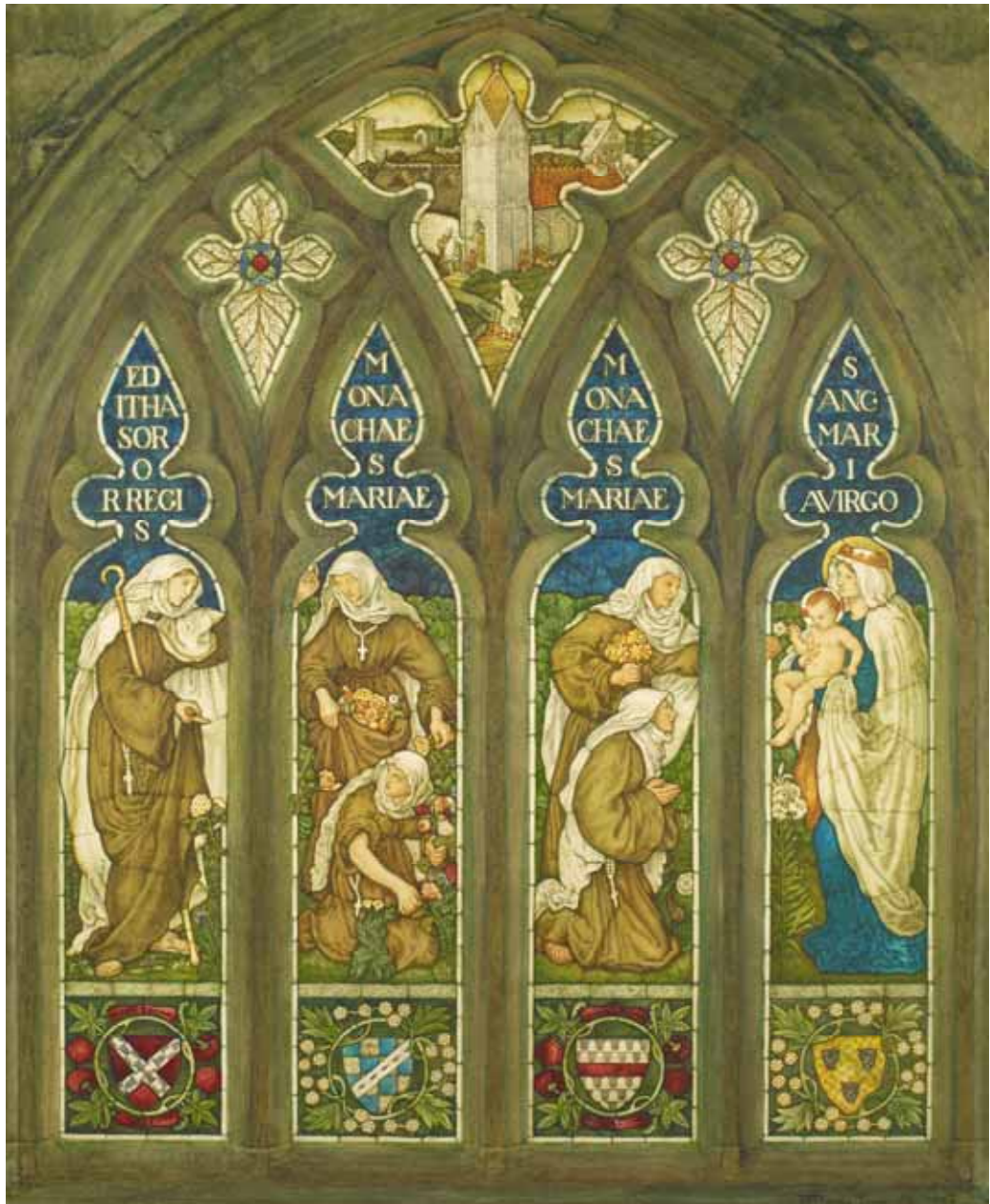
Cat. no. 146 *Stained Glass Design:*
Cartoon for The Young Milton, 1874



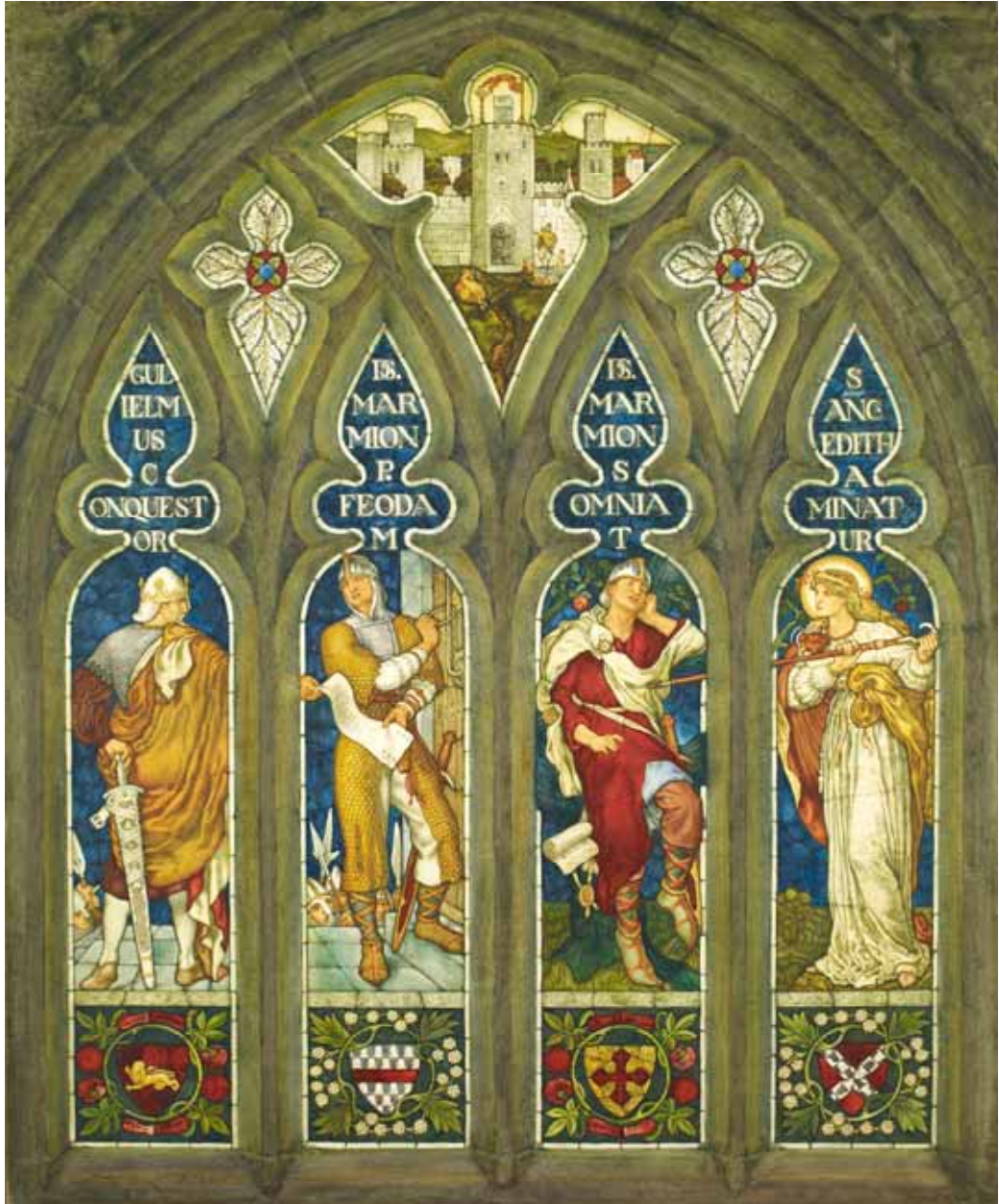
Cat. no. 147 *Stained Glass Design: Cartoon for St Simon, 1874*



Cat. no. 148 *Stained Glass Design: The Marriage of Editha with Sigtrygg, King of Northumbria, 1909*



Cat. no.149 *Stained Glass Design: St Editha and the Nuns of St Mary, 1909*



Cat. no. 150 *Stained Glass Design: William the Conqueror, Lord Marmion and St. Editha, 1909*



Cat. no. 151 Sterne's *'Sentimental Journey'*: Study of Yorick and La Fleur talking to Maria's Mother, 1842



Cat. no. 151 verso: *The Body of Harold brought before William the Conqueror:
Eight Sketches of Figure Groups, c. 1844*



Cat. no. 152 Sterne's *'Sentimental Journey'*: Yorick and Maria Walking, 1842



Cat. no. 153 *Study of Tree Trunk with Roots, c. 1847*



Cat. no. 153 verso *Two Studies of Tree Trunks, c. 1846*



Cat. no. 154 *Unknown Subject: Compositional Sketch, 1843 - 1850*



Cat. no. 155 *Wycliffe reading his Translation of the Bible:
Nude Study for Chaucer, 1847*



Cat. no. 156 *Wycliffe reading his Translation of the Bible:
Study for Chaucer, 1847*



Cat. no. 157 *Wycliffe reading his Translation of the Bible: Nude Study of Gower, 1847*



Cat. no. 158 *Wycliffe reading his Translation of the Bible: Study for Gower, 1847*



Cat. no. 159 *Wycliffe reading his Translation of the Bible: Nude Study for John of Gaunt and Chaucer's right Hand, 1847*



Cat. no. 160 *Wycliffe reading his Translation of the Bible: Study of John of Gaunt and Chaucer's Left Hand, 1847*



Cat. no. 161 *Wycliffe reading his Translation of the Bible:*
Study for Wycliffe, 1847



Cat. no. 162 *Wycliffe reading his Translation of the Bible:*
Nude Study for Wycliffe, 1847



Cat. no. 163 *Wycliffe reading his Translation of the Bible:
Drapery Study for Wycliffe, 1847*



Cat. no. 164 *Wycliffe reading his Translation of the Bible:
Drapery Study for Chaucer, 1848*



Cat. no. 165 *Wycliffe reading his Translation of the Bible:*
Study of Legs for John of Gaunt and
two Studies of Feet for Wycliffe, 1848



Cat. no. 166 *Wycliffe reading his Translation of the Bible:*
Studies of Hands for John of Gaunt and Gower, 1847



Cat. no. 167 *Wycliffe reading his Translation of the Bible:
Study for Head of Wycliffe, 1847*



Cat. no. 168 *Wycliffe reading his Translation of the Bible:
Study for Constance and Child, 1847*



Cat. no. 169 *Wycliffe reading his Translation of the Bible:
Unfinished Study for Head of Constance, 1847-1848*



Cat. no. 170 *Wycliffe reading his Translation of the Bible:
Portrait of Elizabeth Bamford modelling for Constance, 1848*



Cat. no. 171 *Wycliffe reading his Translation of the Bible: Study for Head of Constance, 1848*



Cat. no. 172 *Wycliffe reading his Translation of the Bible: Study for Head of Chaucer, 1848*



Cat. no. 173 *Wycliffe reading his Translation of the Bible:
Study of Monk representing the Catholic Faith, 1848*



Cat. no. 174 *Wycliffe reading his Translation of the Bible:
Study of young Woman representing the Protestant Faith, 1848*